



**CITY OF WHARTON
PARKS AND RECREATION COMMITTEE
MEETING**

**Monday, April 26, 2021
5:30 PM**


CITY HALL

**NOTICE OF
CITY OF WHARTON
PARKS AND RECREATION COMMITTEE MEETING**

Notice is hereby given that a Parks and Recreation Committee Meeting will be held on Monday, April 26, 2021 at 5:30 PM at the Wharton City Hall, 120 East Caney Street, Wharton, Texas, at which time the following subjects will be discussed to-wit:

SEE ATTACHED AGENDA

Dated this 22nd day of April 2021.


By: 
Andres Garza, Jr., City Manager

I, the undersigned authority, do hereby certify that the above Notice of Meeting of the Parks and Recreation Committee Meeting is a true and correct copy of said Notice and that I posted a true and correct copy of said Notice on the bulletin board, at City Hall of said City or Town in Wharton, Texas, a place convenient and readily accessible to the general public at all times, and said Notice was posted on April 22, 2021, at 4:30 p.m. and remained so posted continuously for at least 72 hours preceding the scheduled time of said Meeting.

The Wharton City Hall is wheelchair accessible. Access to the building and special parking is available at the primary entrance. Persons with disabilities, who plan to attend this meeting and who may need auxiliary aids or services such as interpreters for persons who are deaf or hearing impaired, readers, or large print, are requested to contact the City Secretary's Office at (979) 532-4811 Ext. 225 or by FAX (979) 532-0181 at least two (2) days prior to the meeting date. BRAILLE IS NOT AVAILABLE.

Dated this 22nd day of April 2021.

CITY OF WHARTON

By: 
Paula Favors
City Secretary



A G E N D A
CITY OF WHARTON
Parks and Recreation Committee Meeting
Monday, April 26, 2021
City Hall - 5:30 PM

Call to Order.

Roll Call.

Public Comments.

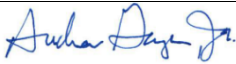
Review and Consider:

1. Minutes from the meeting held March 22, 2021.
2. Discussion on parking in the Downtown Area.
3. Presentation by Ms. Stephanie Konvicka on the Dinosaur Park Expansion Project.

Adjournment.

City of Wharton
120 E. Caney Street
Wharton, TX 77488

PARKS AND RECREATION COMMITTEE

Meeting Date:	4/26/2021	Agenda Item:	Minutes from the meeting held March 22, 2021.
Attached are the minutes from the meeting held March 22, 2021.			
City Manager: Andres Garza, Jr.		Date: Thursday, April 22, 2021	
Approval: 			
Mayor: Tim Barker			

**MINUTES
OF
CITY OF WHARTON
CITY COUNCIL PARKS AND RECREATION COMMITTEE MEETING
City Hall, 120 East Caney Street, Wharton, Texas
Monday, March 22, 2021
5:30 pm**

City Manager Andres Garza, Jr. declared a meeting of the City Council Parks and Recreation Committee duly open for the transaction of business at 5:30 p.m.

Committee Members present were: Councilmember Russell Machann, Councilmember Steven Schneider and Councilmember Terry Freese.

Committee Member absent was: None.

Council Member present was: None.

Staff Members present were: City Manager Andres Garza, Jr., Finance Director Joan Anzel and Community Development Director Gwyn Teves.

Staff Members absent were: Assistant to the City Manager Brandi Jimenez

Visitors present were: None.

Public comments. There were no public comments.

The first item on the agenda was to review and consider minutes from the meeting held July 27, 2020. Councilmember Russell Machann made a motion to approve the minutes as presented. Councilmember Steven Schneider seconded. All voted in favor.

The second item on the agenda was to review and consider discussion on the City of Wharton Food Truck Ordinance and City Parks. City Manager Andres Garza, Jr. stated to the Committee that there had been request for food trucks to rent City Parks. He stated that the current ordinance does not allow food trucks to rent City Parks. After some discussion, no action was taken.

The third item on the agenda was to review and consider update on Guffey Park Pavilion. The City Staff gave a presentation to the Committee on the Guffey Park Pavilion. After some discussion, no action was taken.

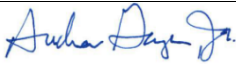
The fourth item on the agenda was adjournment. There being no further business to conduct Councilmember Terry Freese moved to adjourn the meeting. Councilmember Steven Schneider seconded the motion. All voted in favor.

The meeting adjourned at 6:30 p.m.

Andres Garza, Jr. City Manager

City of Wharton
120 E. Caney Street
Wharton, TX 77488

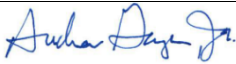
PARKS AND RECREATION COMMITTEE

Meeting Date:	4/26/2021	Agenda Item:	Discussion on parking in the Downtown Area.
<p>The City Staff will update the Committee on the parking in the Downtown Area.</p>			
City Manager: Andres Garza, Jr.		Date: Thursday, April 22, 2021	
Approval: 			
Mayor: Tim Barker			



City of Wharton
120 E. Caney Street
Wharton, TX 77488

PARKS AND RECREATION COMMITTEE

Meeting Date:	4/26/2021	Agenda Item:	Presentation by Ms. Stephanie Konvicka on the Dinosaur Park Expansion Project.
<p>Ms. Stephanie Konvicka will make a presentation to the Committee regarding the Dinosaur Park Expansion Project.</p>			
City Manager: Andres Garza, Jr.		Date: Thursday, April 22, 2021	
Approval: 			
Mayor: Tim Barker			



HESED HOUSE

— OF WHARTON —

Dinosaur Park Expansion Project

Project Proposal:

The health of a community can be judged by the vibrancy of its parks. We believe Hesed House of Wharton can help create a healthier, more resilient community by centering our facility in a vibrant city park. We also believe it is important to help preserve history and promote the rich cultural heritage of our neighborhood and the entire community. We hope The Park Project will be just the beginning of creating vibrant public spaces for Wharton to celebrate diversity, and gather and grow as a resilient community.

Hesed House of Wharton requests approval and support from the City of Wharton to expand the lease on the property of the Dickson Rowan House in Dinosaur Park to include three additional properties: 421, 421A, and 421B Colorado Street. Hesed House of Wharton agrees to assume all responsibility and costs related to improvements of structures and grounds in exchange for the use of the facilities and grounds.

In cooperation with WEDC and Insite Architecture, Hesed House has created renderings for the development of the additional park space and has created a multiphase approach to the project, beginning with the renovation of the existing structure at 421 Colorado Street.

Hesed House of Wharton has secured a contractor and identified a scope of work for the project. Initial funding of \$15,000 has been secured and Hesed House currently has a grant application pending with LCRA. Funding sources are continually being identified, and Hesed House plans to launch a local capital campaign to allow community members to contribute to the project through financial gifts and in-kind donations of labor and materials.

How does this project benefit the community?

Hesed House of Wharton provides services designed to increase individual resources, knowledge, skills, and confidence to adopt and maintain a healthy lifestyle, thus improving individual quality of life and community resilience. Services provided by Hesed House of Wharton align with the goal of Healthy People 2030 to “create social, physical, and economic environments that promote attaining the full potential for health and well-being for all.”

Hesed House of Wharton believes the innovative nature of our holistic approach to reach our target population lies not in the complexity of our method, but rather the simplicity of it. Our goal is for anyone who seeks services at Hesed House to feel safe, connected, and empowered to create change in their own lives. We believe that by providing a safe, welcoming space where community members can connect with themselves and each other, positive change can begin to occur. As community members begin to connect to resources and grow in relationship, they invite others to join them.

We believe everyone has gifts and strengths to offer as part of a community, and we continue to

cultivate a community at Hesed House in which there is no helper/helped relationship, but one in which we all offer something of value to the better of the community. It is this communal environment that continues to surprise and delight community members when they join what we call our Hesed House family.

How would this project improve the quality and quantity of services essential for the development of your community?

Hesed House of Wharton provides free trauma sensitive wellness programming in a nonclinical setting, with special attention given to under-served or disconnected children, youth and families. Various modalities are utilized including professional counseling, yoga, gardening, art, music, and psychoeducational workshops, as well as community enrichment events. Services are designed to increase individual resources, knowledge, skills, and confidence to adopt and maintain a healthy lifestyle, thus improving individual quality of life and community resilience. The Dinosaur Park Expansion Project will help Hesed House increase and expand its capacity to provide essential mental health and wellness services as well as becoming a welcoming community gathering place for all members of the Wharton community. With the addition of 3 additional houses, Hesed House can have designated space for counseling services, providing a secure and confidential environment for clients as well as more space to have multiple classes, programming and activities happening at the same time. As the Colorado River Levee project progresses, the addition of more usable green space in Dinosaur Park will help this park continue to be a favorite gathering place for community members.

Why is this project needed?

Wharton County is identified by the Health Resources and Services Administration of the US Department of Health and Human Services as a Medically Underserved Area (MUA). MUAs identify geographic areas and populations with a lack of access to primary care services. MUAs have a shortage of primary care health services within a specific geographic area. Health services included in this designation are: primary health care, dental care and mental health care. Wharton County is also identified as a region with Medically Underserved Populations (MUPs). Examples include: people experiencing homelessness, people who are low-income, people displaced by disaster, migrant farm workers, and people eligible for Medicaid. Hesed House of Wharton is providing free holistic mental health and wellness services in Wharton County. In addition to professional counseling and wellness services, Hesed House of Wharton provides community support assistance to aid vulnerable community members in learning how to navigate social support systems, finding and accessing resources, and language assistance for our Spanish speaking community members. The need for free or low cost mental health services far exceeds the current services available, and the nonclinical setting of Hesed House coupled with a strengths based wellness approach, is conducive to providing accessible services to a community often resistant to mental healthcare. With the expansion in space, Hesed House can increase its ability to provide crucial services to the Wharton community as well provide opportunities for community members to connect with each, facilitating healing of disaster related trauma.

How often will the project be open or accessible to the public?

Hesed House of Wharton is open 8-5 Monday through Friday and has classes, sessions, and events also available on weeknights and over the weekends. Hesed House strives to be as open and accessible as possible to meet the needs of Wharton and Wharton County residents. Expanding the usable space in Dinosaur Park will enable Hesed House to host more frequent and varied community events in addition to regularly scheduled programming.

Additional Information

In the first year, Hesed House of Wharton made direct contact with over 1,000 community members. Clients utilizing services have self-reported improved quality of life and increased self-efficacy. Hesed House continues to utilize collaborations with various agencies and organizations to create programs to build community resilience, proving to be a vital asset to the community. Currently, space constraints prevent us from expanding community programming.

Our hope is to grow this park as an arts and culture district for Wharton and provide space for groups to meet, artists in residence, expansion of community support services, garden space and community events. We hope to continue growing community buy-in, with the hope of securing annual budgeted giving from local civic organizations, churches, and businesses. We also plan to continue building a strong community coalition that collaborates to support community members in crisis. We hope to continue expansion of Wharton Grows with at least ten new backyard gardens every year, as well as expanding our garden onsite and establishing neighborhood pocket gardens throughout the community, with a special focus on the West End and North Side. In the next three-five years, we will continue to develop and provide trauma-informed professional development for professionals in educational and faith based settings, and public servants, implement robust programming to connect with and support our Latino community members, and develop a scalable model that can be adapted to fit the needs of other rural communities.

We believe the type of public/private partnership The City of Wharton and Hesed House of Wharton continue to cultivate can be a model for other rural communities to build community resilience and foster creative use of public spaces.

Funding

Hesed House has secured \$15,000 to begin work on Phase 1A (421 Colorado St. structure). A grant application for \$50,000 is currently in review with LCRA. We plan to apply for additional funding from AARP, as well as a variety of other funding sources as part of an intensive fundraising campaign.

DINOSAUR PARK

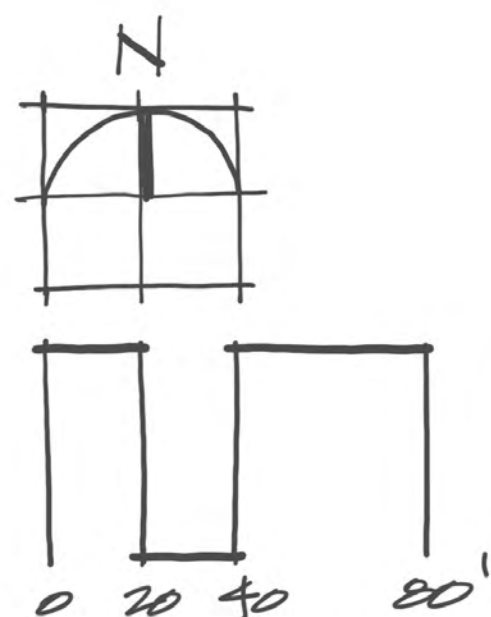


HESED HOUSE
OF WHARTON

CONCEPTUAL MASTER PLAN

LEGEND

- 1. GRAND LAWN
- 2. ACTIVITY PLAZA/FESTOON LIGHTS
- 3. COMMUNITY DEMONSTRATION HEALING GARDENS
- 4. FOOD TRUCKS
- 5. GARDEN PAVILION WITH STORY TELLING/MUSIC
- 6. AMPHITHEATRE LAWN
- 7. SPORT COURT/BASKETBALL VOLLEYBALL
- 8. VEHICLE PARKING-42 AUTOS PERMEABLE PAVING
- 9. DINOSAUR VIEWING AND EXISTING PARKING - 21 AUTOS
- 10. PUBLIC RESTROOMS
- 11. LEARNING COURTS
- 12. D.G. TRAILS CONNECTED TO EXISTING WALKS/HISTORY WALK AND WHARTON LIVING ON THE COLORADO
- 13. LAWN SPACES - PICNIC AND PASSIVE RECREATION
- 14. KIDS ADVENTURE PLAYGROUND WITH HISTORY WALL
- 15. TRAIL CONNECTIONS TO WEST AND EAST WHARTON
- H1. BIG GROUP EVENTS, ART EXHIBITS, TRAINING, FITNESS
- H2. ADMINISTRATION, COFFEE SHOP AND FLEX AREA FOR MEETINGS
- H3. FLEX ART, GROUP MEETINGS AND KITCHEN WITH TEACHING CAPABILITES
- H4. COUNSELING, CENTRAL LAUNDRY CAREER TRAINING, ONE-ON-ONE MEETINGS, SMALL GROUP WITH SENSE OF PRIVACY



20030.001
 JAN 15, 2021



$N78^{\circ}51'09''W$ 5.91'
 $N58^{\circ}54'48''W$ 30.19'
 $S55^{\circ}57'01''W$ 37.55'
 $S28^{\circ}23'48''W$ 49.58'
 $S27^{\circ}27'30''W$ 62.85'
 $S68^{\circ}02'39.88''$
 $S68^{\circ}56'24''W$ 34.94'
 $S61^{\circ}21'18''W$ 125.50'
 $S68^{\circ}20'25''W$ 98.50'
 $S69^{\circ}27'00''$ 61.30'
 $S58^{\circ}39'50''$ 82.01'
 $S67^{\circ}21'18''W$ 125.50'
 $S68^{\circ}20'25''W$ 98.50'
 $S69^{\circ}27'00''$ 61.30'
 $S58^{\circ}39'50''$ 82.01'

LEVEE EASEMENT (LE) - 1.583 AC
 FLOWAGE AND SUMP EASEMENT (E)



DINOSAUR PARK

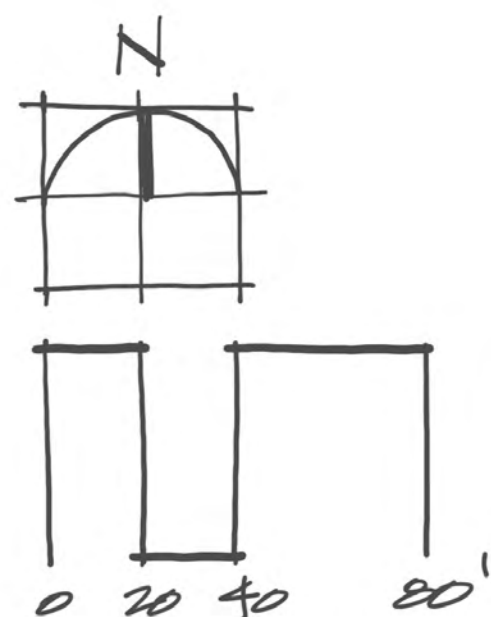
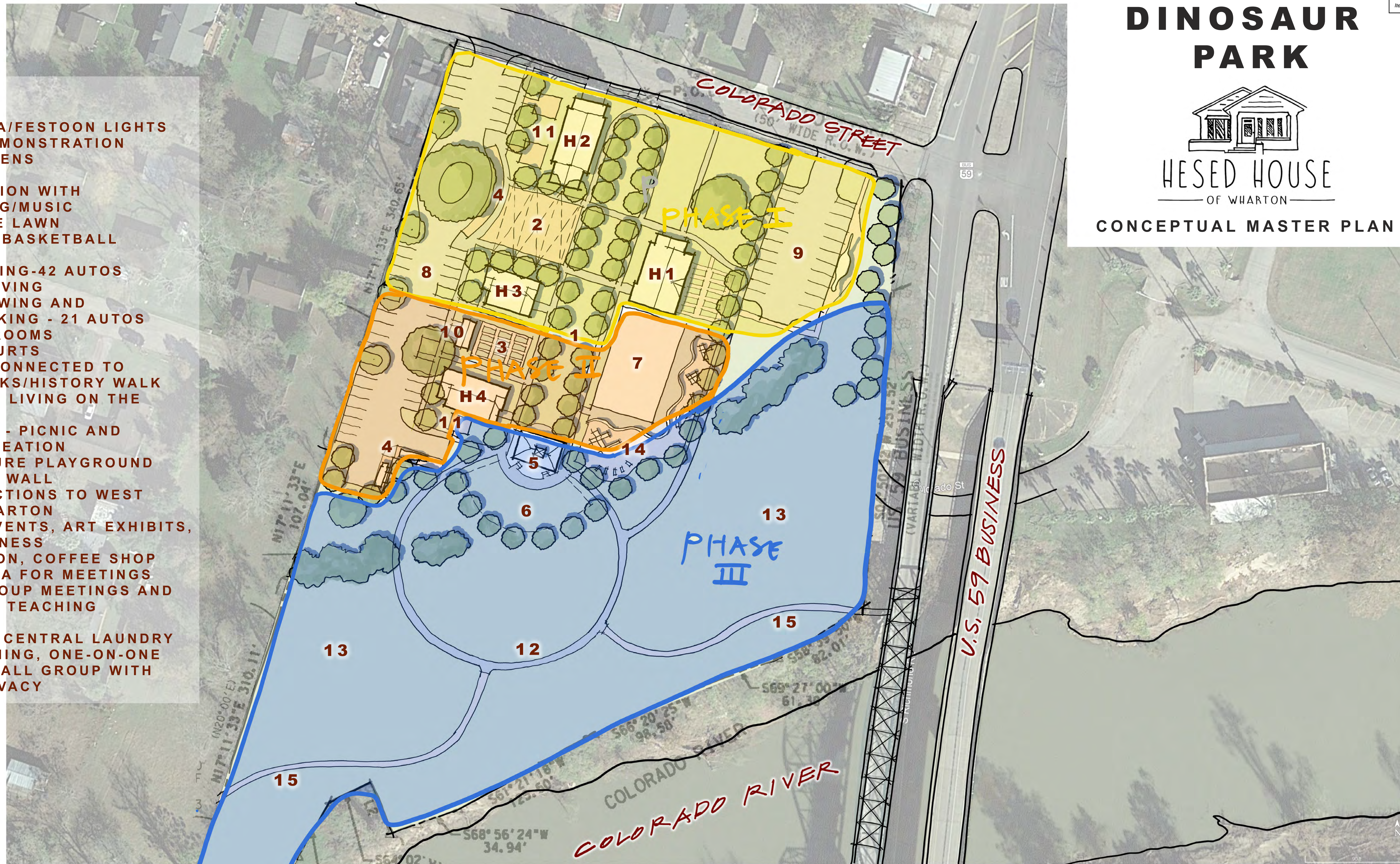


HESD HOUSE
OF WHARTON

CONCEPTUAL MASTER PLAN

LEGEND

- 1. GRAND LAWN
- 2. ACTIVITY PLAZA/FESTOON LIGHTS
- 3. COMMUNITY DEMONSTRATION HEALING GARDENS
- 4. FOOD TRUCKS
- 5. GARDEN PAVILION WITH STORY TELLING/MUSIC
- 6. AMPHITHEATRE LAWN
- 7. SPORT COURT/BASKETBALL VOLLEYBALL
- 8. VEHICLE PARKING-42 AUTOS PERMEABLE PAVING
- 9. DINOSAUR VIEWING AND EXISTING PARKING - 21 AUTOS
- 10. PUBLIC RESTROOMS
- 11. LEARNING COURTS
- 12. D.G. TRAILS CONNECTED TO EXISTING WALKS/HISTORY WALK AND WHARTON LIVING ON THE COLORADO
- 13. LAWN SPACES - PICNIC AND PASSIVE RECREATION
- 14. KIDS ADVENTURE PLAYGROUND WITH HISTORY WALL
- 15. TRAIL CONNECTIONS TO WEST AND EAST WHARTON
- H1. BIG GROUP EVENTS, ART EXHIBITS, TRAINING, FITNESS
- H2. ADMINISTRATION, COFFEE SHOP AND FLEX AREA FOR MEETINGS
- H3. FLEX ART, GROUP MEETINGS AND KITCHEN WITH TEACHING CAPABILITES
- H4. COUNSELING, CENTRAL LAUNDRY CAREER TRAINING, ONE-ON-ONE MEETINGS, SMALL GROUP WITH SENSE OF PRIVACY



20030.001
 JAN 15, 2021



$N78^{\circ}51'09''W$ 5.91'
 $N58^{\circ}54'48''W$ 30.19'
 $S55^{\circ}57'01''W$ 37.55'
 $S28^{\circ}23'48''W$ 49.58'
 $S27^{\circ}27'30''W$ 62.85'
 $S68^{\circ}02'39.88''$
 $S68^{\circ}56'24''W$ 34.94'
 $S61^{\circ}21'18''W$ 122.50'
 $S66^{\circ}20'25''W$ 98.50'
 $S69^{\circ}27'00''$ 61.38'
 $S58^{\circ}35'30''$ 82.01'
 LEVEE EASEMENT (LE) - 1.583 AC
 FLOWAGE AND SUMP EASEMENT (E)

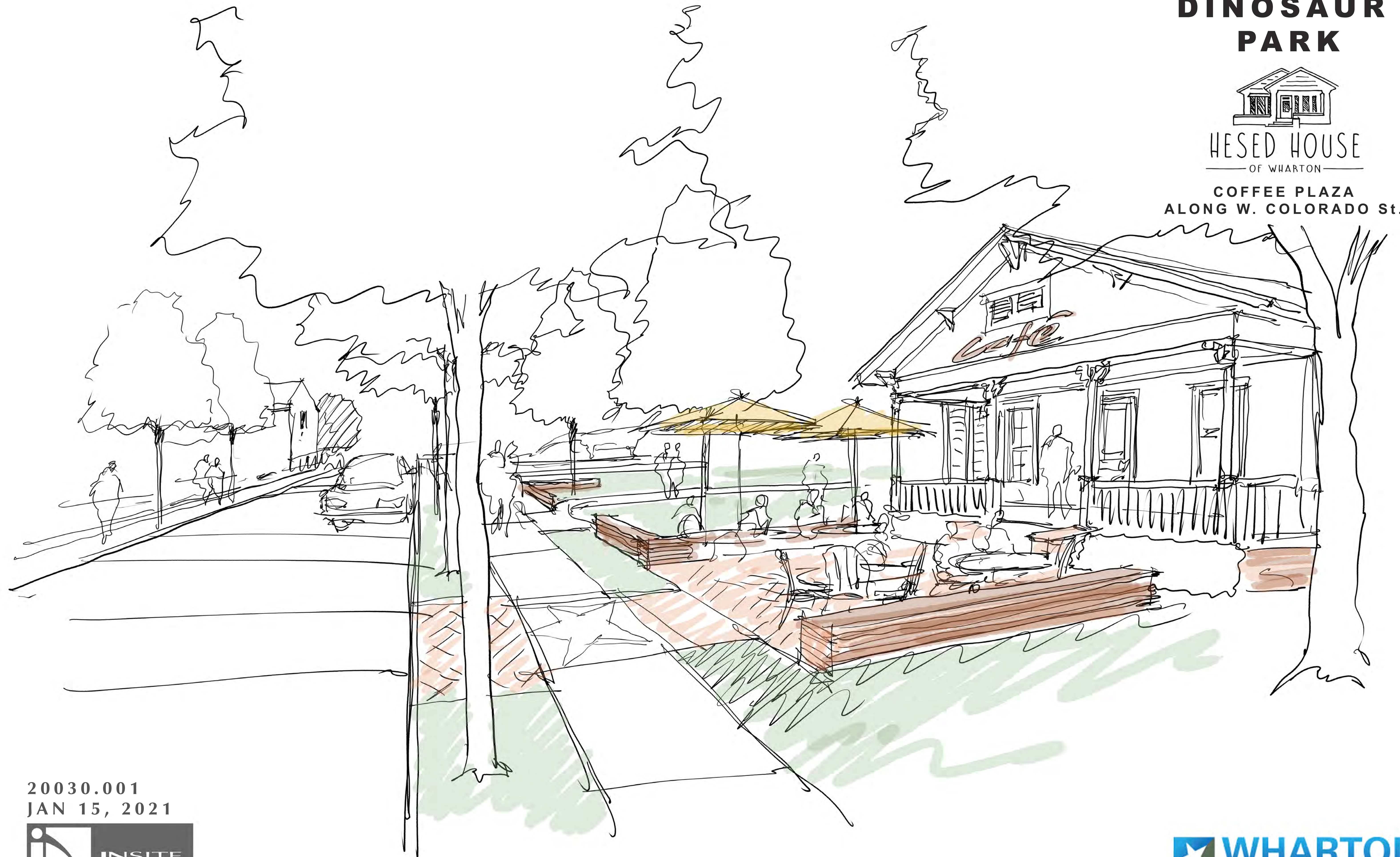


DINOSAUR PARK



HESD HOUSE
OF WHARTON

COFFEE PLAZA
ALONG W. COLORADO St.



20030.001
JAN 15, 2021



DINOSAUR PARK



HESD HOUSE
OF WHARTON

GREAT LAWN WITH
MUSIC PAVILION



20030.001
JAN 15, 2021

