



**PARK BOARD MEETING**  
**RICK HEROLD ADMINISTRATION BUILDING - HALL OF FAME**  
**CONFERENCE ROOM, 400 COLLEGE ST.**  
**WEDNESDAY, FEBRUARY 24, 2021 AT 6:30 PM**

---

**AGENDA**

**CALL TO ORDER**

**CITIZEN COMMENTS**

*Citizens may speak during Citizen Comments for up to five minutes on any item not on the agenda by completing and submitting a speaker card.*

**AGENDA ITEMS**

- 1. Approval of January 27, 2021 Minutes, Presented by B.J. Nichols**
- 2. Award Presentation, Presented by Duane Strawn and B.J. Nichols**
  - a. October Partnership Award - Falkenburg Construction
  - b. October Exemplary Employee of the Month - Jeremy Thomas, The Epic
  - c. November Exemplary Employee of the Month - Jason Williams, Lake Parks
  - d. November Team Work - Dan Matthews & Jordyn Whitney, Special Events
- 3. Report of the Tree Board Report, Presented by Duane Strawn**
- 4. Mi Familia Park Presentation, Presented by Steve Plumer**
- 5. Park Board Chairman Presentation, Presented by B.J. Nichols**
  - a. The Summit Opening
  - b. PlayGrand Adventures Status
- 6. Director Updates, Presented by Duane Strawn**
  - a. Winter Storm 2021

**ADJOURNMENT**

*Certification - In accordance with Chapter 551, Subchapter C of the Government Code, V.T.C.A, the Park Board agenda was prepared and posted February 19, 2021.*

This meeting location is wheelchair accessible. If you plan to attend this public meeting and you have a disability that requires special arrangements, please call 972-237-8107 at least 24 hours in advance. Reasonable accommodations will be made to assist your needs.

---

*Krista Marrs, Administrative Supervisor*



**PARK BOARD  
TELECONFERENCE  
WEDNESDAY, JANUARY 27, 2021 AT 6:30 PM**

## MINUTES

### CALL TO ORDER

The City of Grand Prairie Park Board Meeting convened at 6:30 PM on January 27, 2021 via teleconference.

#### Park Board Members Present:

B.J. Nichols	John Stewart	Emita Garcia	Jerry Partain	VanDella Meniffee
Greg Mullen	Malcom Chakery	Mal Earl	Bryan Parra	

#### City Staff Present:

Duane Strawn    Krista Marrs

### CITIZEN COMMENTS

No citizens were in attendance to comment

### AGENDA ITEMS

#### **Approval of December 2, 2020 Minutes, Presented by B.J. Nichols**

Greg Mullen made a motion for approval of the December 2, 2020 minutes and Mal Earl seconded the motion. The motion passed unanimously.

#### **Naming Committee Presentations, Presented by Naming Committee Chairs**

- a. Park Naming Committee Recommendation for Parks, Arts & Recreation Administration Building.
  - Jerry Partain made a motion to rename the Parks, Arts & Recreation Administration building to the Rick Herold Administration Building. Mal Earl seconded the motion. The motion passed unanimously.
- b. Park Naming Committee Recommendation for Prairie Lakes Tournament Pavilion
  - Malcom Chakery made a motion to name the Prairie Lakes Tournament Pavilion the Jerry V Debo III Pavilion at Prairie Lakes. VanDella Meniffee seconded the motion. The motion passed unanimously.

#### **Report of the Tree Board Report, Presented by Duane Strawn**

The following is a list of tree related activities for Parks, Lake Parks, Golf Courses, and Cemetery Divisions reported for the month of December 2020.

Parks Maintenance: (North, South, Municipal & Gateway Crews)

- 1,600 Man hours – Winter Pruning, maintenance, removal, hauling brush.

Lake Parks: (Lynn Creek Park / Loyd Park)

- 40 Man hours – Pruning, maintenance, removal, stump grinding, and storm clean up  
Golf Courses: (Prairie Lakes / Tangle Ridge)
  - 128 Man hours – Pruning, maintenance and storm clean up  
Cemetery:
  - 5 Man Hours – Pruning and maintenance
- Totals for Tree Related Activities:
- 1773 - Man hours

Tree City USA Update: We have submitted our Tree City USA application for our 37<sup>th</sup> year. The Texas Forest service has approved our application and we will be accredited from the Arbor Day Foundation in the coming weeks.

Epic Central Butterfly Garden: The National Wildlife Foundation has approved the Butterfly Garden as a “Certified Wildlife Habitat” The Garden promotes Food, Water, Shelter, a place to raise young, along with sustainable practices. We have placed a neat plaque in the garden.

### **Park Board Reports, Presented by The Park Board Members**

- a. Special Events (Malcom Chakery) – Prairie Lights had a record-breaking year. Chicken N Pickle had their groundbreaking on Friday, Jan 22. Recreation team hosted the MLK Celebration and Parade at Epic Central on MLK Jr. Day.
- b. Recreation (Mal Earl) – Center continue to be used as Fitness centers and hosts after school programs.
- c. The Summit (John Stewart and Emita Garcia) – March 1<sup>st</sup> is still the projected opening date. Meal Program still serving 65 meals daily. Several construction projects have been completed
- d. Uptown/Market Square (Bryan Parra and Jerry Partain) – Farmers Market wrapped up with over 200+ guests. Uptown has a steady flow of rentals. There will not be season tickets for 2021. They are looking into improvements and future events. They will continue to work with GPAC on their plays.
- e. Playgrounds (Mal Earl) – Parkhill Park looks great
- f. Ruthe Jackson Center (Bryan Parra) – 50% capacity brides are still booking wedding. Hoping to see more corporate events soon.
- g. Golf (Greg Mullen) – The courses are still maintaining great business
- h. The Epic (John Stewart and Malcom Chakery) – GroupFit classes taught inhouse. Hit 10,000 members since closing in March 2020 due to COVID Pandemic. Continuing to grow membership with positive feedback on cleanliness of facility.
- i. PlayGrand Adventures (Emita Garcia) – PlayGrand is still closed and there are patrols to keep people from jumping the fences. Working towards next steps to fundraise and start the next Phase of PlayGrand Adventures.
- j. Cricket/Rugby (B.J. Nichols) – League play has continued for Cricket and Rugby.
- k. Lake Parks (VanDella Meniffee and Jerry Partain) – No report
- l. Memorial Gardens (VanDella Meniffee) – Have had several burials and sold out of certain areas.
- m. Alliance Skate Park (B.J. Nichols) – Had a successful year and sold out nearly every week of camps
- n. Pickleball (Greg Mullen) – Averaging 150 players per week and will be part of the fitness component offered when The Summit reopens
- o. Sports Association (VanDella Meniffee) – Complexes are closed during the winter for maintenance. Boys baseball and Girls fastpitch are in registration for spring season.

**Chairman Presentation, Presented by B.J. Nichols**

- a. 2021 Park Board Schedule - Meetings will be the 4<sup>th</sup> Wednesday of the month with the following exceptions: No meeting in July for National Parks & Recreation Month. We will combine November and December's meeting on December 1.
- b. Mi Familia Park – City Council adopted the new name on October 18, 2020 and the new sign was added to the park this month.

**Director Presentation, Presented by Duane Strawn**

- a. Prairie Lights – Prairie Lights had a very successful year. Staff did a great job organizing the event during the pandemic.
- b. EpicCentral – Chicken N Pickle had their groundbreaking on Friday, Jan 22. Should open sometime this fall. Within the next 18-24 months EpicCentral should be developed.
- c. COVID-19 – City employee in housing passed away recently in relation to COVID. Our department wide protocols are spot on and we're making every location as safe as possible for all our citizens and guests.

**ADJOURNMENT***Certification*

*In accordance with Chapter 551, Subchapter C of the Government Code, V.T.C.A, the Park Board agenda was prepared and posted January 22, 2021.*

Krista Marrs, Administrative Supervisor

## MEMORANDUM

**TO:** Tree Board

**FROM:** Andrew Snyder, Operations Supervisor

**RE:** January 2021 Tree Related Activities

**DATE:** Thursday, February 18, 2021

The following is a list of tree related activities for Parks Maintenance, Lake Parks, Golf Courses, and Cemetery Divisions reported for the month of January 2021.

**Parks Maintenance:** (North, South, Municipal & Gateway Crews)

- 1,680 Man hours – Winter Pruning, maintenance, removal, hauling brush.

**Lake Parks:** (Lynn Creek Park / Loyd Park)

- 300 Man hours – Pruning, maintenance, removal, stump grinding, and storm clean up

**Golf Courses:** (Prairie Lakes / Tangle Ridge)

- 140 Man hours – Pruning, maintenance and storm clean up

**Cemetery:**

- 5 Man Hours – Pruning and maintenance

**Totals for Tree Related Activities:**

- 2,125 - Man hours

**Horticulture Updates:**

- **Grand Prairie Fire Station #1**
  - On January 15, 2021 we replace a tree that had died during the spring of 2020 in front of the Fire Station along Main St.
  - 1 - 3" Cedar Elm at the cost of \$770.00
- **Park & Ride (located along I30, east of Beltline rd.)**
  - On January 25, 2021 we completed Phase 1 tree replacements.
    - 7 Cedar Elm Tree's and 4 Natchez Crape Myrtles at a cost of \$4,980.00
- **Mike Lewis Park Erosion Improvement (located along the Trinity River)**
  - On January 26, 2021 we completed Phase 1 Streambank Stabilization. This was funded by the Grand Prairie Utility Services Department at the cost of \$8,930.00. This planting spans 170' along the Trinity River with 72 native trees and grasses.
    - 2 Texas Red Oak, 2 Blackjack Oak, 2 Cedar Elm, 2 Texas Red Bud, 20 Creeping Vitex, 9 Possum Holly, 35 White Honeysuckle.
- **Tree City USA**
  - Application has been approved by Tree City USA! We will receive the official certificate for our 37<sup>th</sup> year in the coming days.



PARKS, ARTS & RECREATION

**Mi Familia Park  
Long Range Redevelopment Plan**

**(Mountain Creek Lake Park Master Plan)**

**February 24, 2021**



# Existing Conditions, Site Inventory and Analysis

- Task:
  - Evaluate the park site with special attention to:
    - Regional Context
    - Site Context
    - Vehicular Access
    - Site Hydrology
    - Site Topography
    - Slope Analysis
    - Existing Ecozones
    - Canopy Coverage
    - Pedestrian Circulation and Amenities



Grand Prairie  
— T E X A S —  
PARKS, ARTS & RECREATION

Mi Familia Park

# Existing Conditions



- 2402 Cardiff
- 117 Acres
- Classification – Community/City Park
- Amenities Typically Include:
  - 1 - 2 Mile Service Area
  - 5 Minute Drive
  - Field/Court Games, Playgrounds, Picnic Areas, Shelters, Walking Trails, Natural Areas
- Existing Amenities –
  - Hard and Soft Trails
  - Playground
  - Pavilion
  - Restroom
  - Disc Golf
  - Basketball Court
  - Parking



## Mi Familia Park



# Existing Conditions



Mi Familia Park



# Existing Conditions

Item 4.



Mi Familia Park



# Existing Conditions



Grand Prairie  
— T E X A S —  
PARKS, ARTS & RECREATION

Mi Familia Park

# Existing Conditions



Grand Prairie  
— T E X A S —  
PARKS, ARTS & RECREATION

## Mi Familia Park



# Existing Conditions



Grand Prairie  
— T E X A S —  
PARKS, ARTS & RECREATION

## Mi Familia Park



# Site Inventory and Analysis



## Regional Context

- Location
- Surrounding Land Uses
- Regional Highways
- Geographical Features
- Neighborhood Context



# Site Inventory and Analysis

## Mi Familia Park Context

- Major Utility Easement
- 100 year Floodplain
- Local Vehicular Access
- Primary Arrival Nodes
- Site Parking Lots
- Illegal Park Vehicular Access
- **Pedestrian Concrete Trails**
- Pedestrian Soft Surface Trails
- Tree Species Analysis
- Slope Analysis
- Eco Zone Analysis



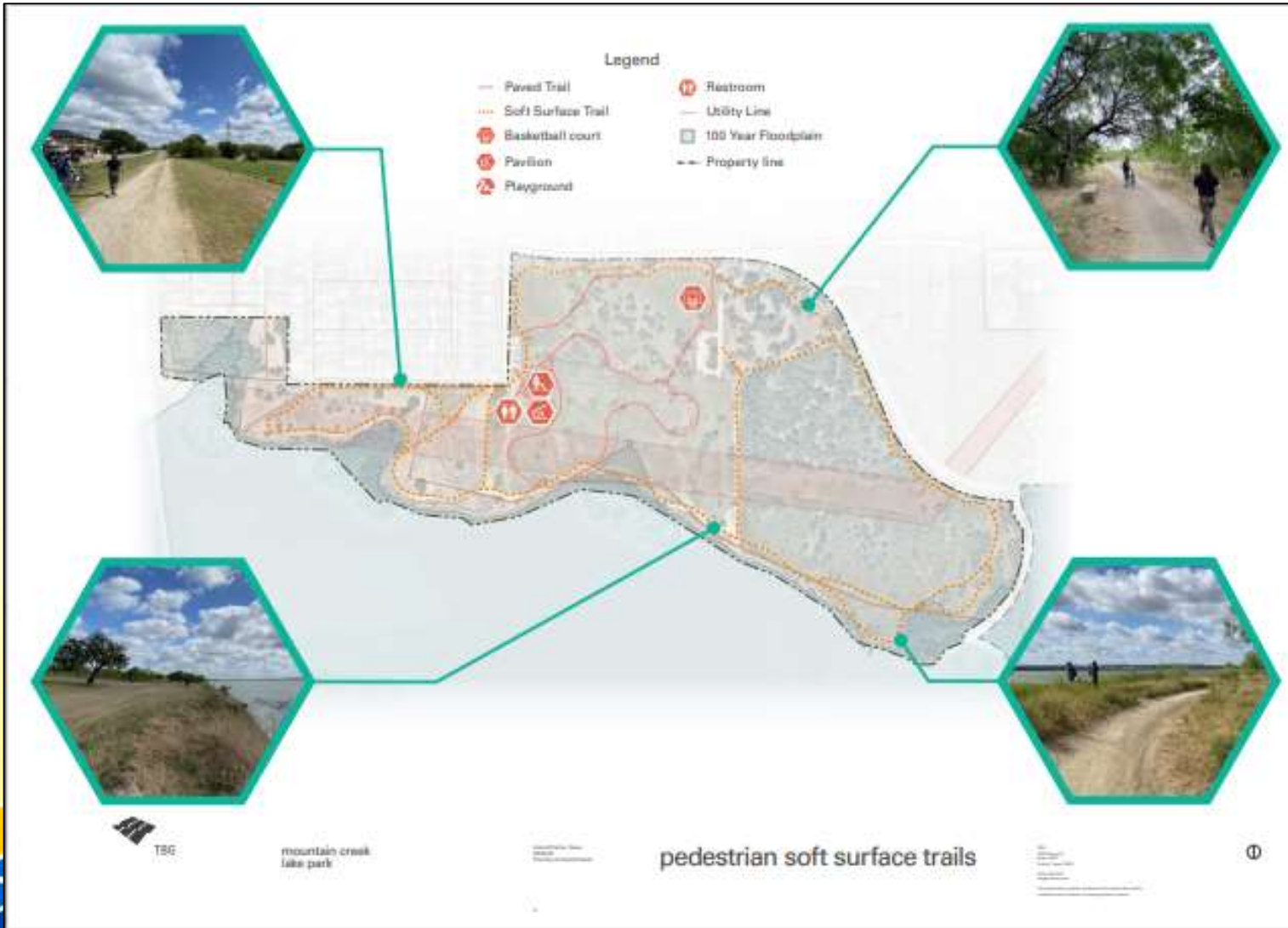
Grand Prairie  
— T E X A S —  
PARKS, ARTS & RECREATION

# Mi Familia Park

# Site Inventory and Analysis

## Mi Familia Park Context

- Major Utility Easement
- 100 year Floodplain
- Local Vehicular Access
- Primary Arrival Nodes
- Site Parking Lots
- Illegal Park Vehicular Access
- Pedestrian Concrete Trails
- **Pedestrian Soft Surface Trails**
- Tree Species Analysis
- Slope Analysis
- Eco Zone Analysis



Grand Prairie  
 — TEXAS —  
 PARKS, ARTS & RECREATION

Mi Familia Park



# Site Inventory and Analysis

## Mi Familia Park Context

- Major Utility Easement
- 100 year Floodplain
- Local Vehicular Access
- Primary Arrival Nodes
- Site Parking Lots
- Illegal Park Vehicular Access
- Pedestrian Concrete Trails
- Pedestrian Soft Surface Trails
- Tree Species Analysis
- **Park Slope Analysis**
- Eco Zone Analysis



Grand Prairie  
— T E X A S —  
PARKS, ARTS & RECREATION

# Mi Familia Park

# Site Inventory and Analysis



## Mi Familia Park Context

- Major Utility Easement
- 100 year Floodplain
- Local Vehicular Access
- Primary Arrival Nodes
- Site Parking Lots
- Illegal Park Vehicular Access
- Pedestrian Concrete Trails
- Pedestrian Soft Surface Trails
- **Tree Species Analysis**
- Slope Analysis
- Eco Zone Analysis



# Mi Familia Park



# Site Inventory and Analysis



## Existing Ecozones

- Dense Mesquite Woodland
- Mesquite Savannah
- Maintained Rolling Meadow
- Emergent Prairie/Wildflower
- **Riparian Marsh**
- Shoreline Embankment

Grand Prairie  
— T E X A S —  
PARKS, ARTS & RECREATION

# Mi Familia Park

# Opportunity and Constraints

neighborhood

mtn. creek lake

**OPPORTUNITY:** Severely compacted soils and proximity to primary trails make this area a suitable lake overlook plaza or stage backdrop.

**CONSTRAINT:** Severe erosion and washout along the lake front has exposed existing sewer manholes and will continue to erode the site if unmitigated in the future.

## Opportunities

- General statements on existing condition opportunities and what typically fit these conditions as design features

## Constraints

- General statements on existing condition constraints and what the limitations may be.



# Mi Familia Park

# Community Engagement - Notification

**ESPAÑOL EN EL OTRO LADO**

## YOUR OPINION COUNTS! TELL US WHAT YOU WANT.

### Mountain Creek Lake Park Community Engagement Meeting

September 24, 2020 - 6:30 PM  
Ruthe Jackson Center - 3113 S Carrier Pkwy

The City of Grand Prairie Parks, Arts & Recreation Department is developing a long-range redevelopment plan for Mountain Creek Lake Park and would like to hear from you! Your experiences from the past along with your ideas for the future will help the City and its consultants put together a plan that will best serve the community for many years to come.

**Who can participate?**  
You, your family, and anyone else who is willing to share their ideas for the park.

**How can I participate?**  
This in-person "Community Engagement" meeting will allow for those in attendance to:

- Share their past experiences
- Express ideas for the redevelopment
- Participate in discussions and idea-generating exercises

Spanish translators will be available to assist. Social distancing and other safety measures will be observed.

For those who are not able to attend the in-person meeting, or those who wish to express their ideas in an alternative way, an online survey is available. Scan the QR code to the right or visit the following address: <https://bit.ly/2RrKGO1>

**Scan here for our online survey**



Grand Prairie PARKS, ARTS & RECREATION

**ENGLISH ON OTHER SIDE**

## ¡SU OPINIÓN CUENTA! DINOS LO QUE QUIERES.

### Reunión de participación comunitaria de Mountain Creek Lake Park

24 de septiembre de 2020 - 6:30 PM  
Ruthe Jackson Center - 3113 S Carrier Pkwy

El departamento del City of Grand Prairie Parks, Arts and Recreation está desarrollando un plan para Mountain Creek Park y quiere escuchar sus experiencias del pasado y el futuro. La ciudad y sus consultores armarán un plan que mejor sirva a la comunidad durante muchos años.

**Quien puede participar?**  
Usted, su familia cualquier otra persona que este dispuesta a compartir sus ideas para el parque.

**Como participar?**  
Este es persona "Reunion de participacion comunitaria" permitira a los participantes a:

- Compartir sus experiencias pasadas
- Expresar ideas para la remodelación
- Participar en debates y ejercicios de generacion de ideas

Traductores de español estara disponible as asistir. Se observaran distancia social y otras medidas de seguridad.

Para aquellos que no pueden asistir a la reunion presencial, o aquellos que deseen expresar sus ideas de una manera alternativa, una encuesta en linea esta disponible aqui: <https://bit.ly/2RrKGO1>

**Escanear aquí para la encuesta en linea**



Grand Prairie PARKS, ARTS & RECREATION

Task: Provide an opportunity for the community to be a part of the Redevelopment Process

Community Meeting  
September 24, 2020

- Mailer Household Notification
- Neighborhood Signs
- Park Signs
- Website Notifications and Updates
- All Notifications - English & Spanish



## Mi Familia Park



# Community Engagement - Presentation

Item 4.

## Mountain Creek Lake Park

### Community Engagement Session

Ruthe Jackson Center // Grand Prairie, Texas

September 24th, 2020



## Community Meeting

- Presentation of Existing Conditions and Context
- Opportunities and Constraints
- Educated audience to understand how Site Context influences development
- Consultant came in with without any design conclusions
- Question and answer session and Site Analysis Booths
- Heard community concerns
- Opportunity to express their thoughts on 'Pros' & 'Cons' Boards
- Spanish translators at each area

Grand Prairie  
— T E X A S —  
PARKS, ARTS & RECREATION

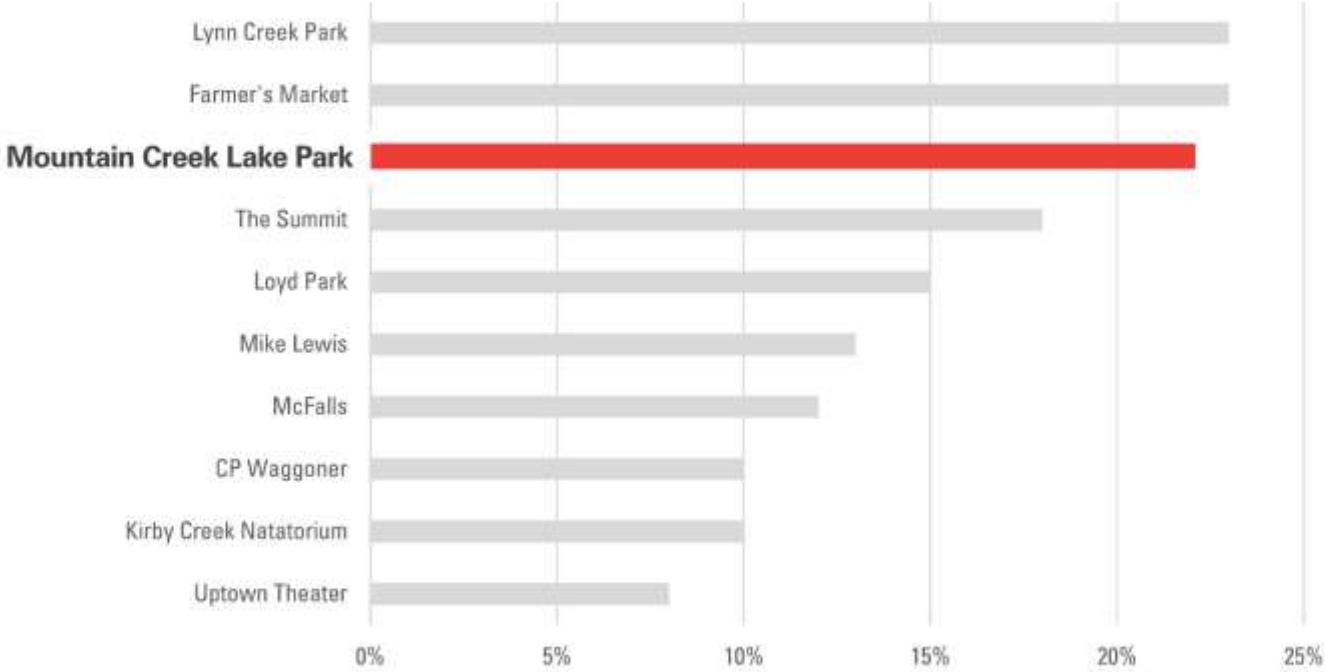


Grand Prairie  
— T E X A S —  
PARKS, ARTS & RECREATION

## Mi Familia Park

# Community Engagement - Presentation

Top 10 Parks and Recreation Facilities Visited During the Last 12 Months



\*Source: (2016) City of Grand Prairie District 3 Parks & Rec Open Space Masterplan Project Discovery 2026

Grand Prairie  
— T E X A S —  
PARKS, ARTS & RECREATION

## Mi Familia Park



# Community Engagement - Expression



### Summary of Concerns

- Safety
  - Lighting
  - Personal Safety
- Park Conditions-
  - Maintenance
  - Age
  - Wear and Tear
- Street Activity
  - Illegal Activity, Guns, Drugs, etc.
  - Speeding
  - Illegal Access to Park
  - Lack of Police Patrol

### Summary of Compliments and Requests

- Safety
  - Police Presence
- Nature
  - Wildflowers
  - Wildlife
  - Beauty of the Park
- Hike & Bike Trail
- Park Amenities
  - Picnic Areas
  - Boardwalks
  - Fishing Pier
  - Boat Launch



## Mi Familia Park





# Community Engagement - Survey

Please fill in the blank for your hopes of the future of the park

I hope that (Any thing you want to see in the park?) ....

- 1. What is the zip code of your home?
- 2. How often to you visit the park  
Once a month  
2-4 times per month  
1-2 times per week  
2 + times per week
- 3. How do you arrive to the park?  
Car  
Walking  
Bicycle  
Other
- 4. How many people attend the park with you on a regular basis?  
0  
1  
2  
2+
- 5. What is your age?  
Younger than 16  
16-25  
26-35  
36-45  
46-55  
55+

6. What areas of the park do you visit?

- Pavilion & Playground
- Basketball
- Trails
- Lake Shore
- Disc Golf

7. Rank the following program items in order of priority, 1 being the least priority, 5 being the highest priority for the future park.

- Pavilion – 1-5
- Playground 1- 5
- Children’s Splashpad 1-5
- Fitness Equipment 1 -5
- Mountain Biking Trails 1 -5
- Family Picnic Area with Grilling Stations 1 -5
- Fishing Docks 1 -5
- Open Lawns 1-5
- Natural Areas 1-5
- Wetland Boardwalks 1-5
- Disc Golf 1-5

8. Do you or your family have any meaningful stories of your past experiences in the park that you would like to share with us?

9. Who is your biggest local or community hero?



## Mi Familia Park

# Community Engagement – Survey Results

Item 4.

Summary of the top “Hope” for the park.

- Security
- Stop Vehicle Access
- Clean-up
- Lighting, Pavilion/Picnic, Playground, Trails
- Exercise, Trash Containers
- Dog Park
- Basketball Court, Sand Volleyball, Splashpad
- Fishing Docks, Flowers, Grills, Soccer Field, Waterfall
- Art, Community Garden, Swim

Please fill in the blank box below for your hopes of the future of the park. I hope that...

## general neighborhood

- ...the neighborhood can continue to walk and hang out together.
- Make it family friendly with tables and some type of coverage for shade.
- I came in order and everything improves for the good of the community.
- It becomes more family oriented...
- The park is very nice as it is a very large space and there is much they can do to exercise for children and for those who fish.
- ...family friendly.
- The park continues to grow and be nice for the community friends and family to continue to exercise.
- It continues to provide a space for the community to exercise.
- It stays busy with gathering and work outs walking gets jogging picnics lots of happy times.
- There could be fitness classes offered in the park.
- Our park can be a fun place for our children to go with more activities for them to do.
- The park will...be family friendly.

## policing

- More police officers around and trash containers.
- I will see a stronger law enforcement presence.

## maintenance + operations

- The park gets cleaned up and the crack seals get run out of town permanently.
- To take pride in a maintained area...not to see filthy pampers, trash, etc.
- Keep the path clean.
- Keep it cleaner and neater.
- Cleaner...
- ...collect the garbage that is all over the path.
- Work on a plan to clean the lake and surrounding area so that people can swim in it.
- They cut the grass more often.
- This park has more flowers.
- I hope that we can keep it cleaner...
- I have worked hard trying to keep things clean and the wrong people out.
- ...stations for trash and dog cleanup.
- You'll mow the grass, trim the trees, pick up the trash...
- The park is well kept, clean...
- This park stays clean.
- I hope the park is cleaned up and maintained properly and consistently.
- To have a better cleaner park.
- People will respect the park and pick up their trash.
- I hope the park was cleaner.
- ...trash cans around park...

## amenities

- I hope that they add more swings and make them for different size people.
- More pavilion/recreational space would be good. A dog park please since so many of the households near by have pets.
- Please add docks by the lake, sand volleyball courts, more basketball courts, updated parking lot...and a dog park.
- I hope that a fenced dog park can be added to the park...it would also be nice to have upgraded/expanded sand volleyball courts at the park.
- Some type of coverage for shade.
- I hope that there would be more playground place for kids. Also trails around the park.
- A bigger park for my kids to have more room for their activities.
- They add a splash pad.
- A water park/splash pad area along with a modern playground...some art to look at.
- The city would had amenities to be able to fish with my kids since we live at a walking distance.
- Bigger updated playground? Possibly some bike trails for bikers only and maybe some more lighting and a nice waterfall/fountain.
- Make pavement trails wider. Add kids splash pad...However add more flat parts in between them so you can have picnics or other activities. Free events hosted in the park...like yoga, workouts, concerts. Add another pavilion...Sand volleyball court. Community garden.
- A good path to run.
- We get awesome amenities like a bigger play ground, maybe even interactive photo props to take pictures.
- They park have a better trail ways to walk comfortable.
- Dog park built.
- A sidewalk along the way of the west side and maybe some day a marina.
- Someday have a little soccer field.
- Make a trail, install some benches.
- Picnic pavilions along the lake shore and throughout the park.
- We get a better court.
- I hope the walk ways can be more modernized. We would like more grills and tables.
- Modernization of the walkways, more picnic tables, and grills for cooking.
- Shade to play during Texas heat.
- The park will have newer equipment.
- I hope that we get a soccer field.
- I hope the city can plant lots of trees in both side of the trail.
- Water fountain will be great along the trail too.
- Better playgrounds, park tables, more basket ball courts, and exercise equipment.
- Paved walkway, trash cans around park.

## access control + security

- The park gets updated and more secure for everyone.
- ...better lighting...
- ...better lighting or security cameras in the parking lot areas would be appreciated to provide some sense of safety and security for everyone.
- The safety of the park increases...
- Cameras if people are driving in the park or vandalizing. Lighting in dark areas.
- I hope that the park could be monitored and laws enforced at the park. During more visits, I've come across aggressive ATV riders and pot smokers.
- I would like for there to be more lights, so we can walk before it gets dark and have some safety phones.
- ...the crack seals get run out of town permanently.
- Mountain Creek Park restricts there cars "driving" through the park to get to the edge of the lake.
- No truck , cars, four wheels, inside of the park or near to lake area...
- They would put more lights.
- The park have more control of the cars on the grass.
- Let the bathrooms have light.
- Putting up security camera for the safety of those of us who visited the park.
- Put. More. Wildlife. Put. Cameras.
- Enforce no motor vehicles, the natural trails have been destroyed because cars go in there.
- Put lights all over the park.
- Add more light to the park. It's very dark out and tons of people smoke and drink there at night.
- That the park will be safe for all.
- Cars stay on pavement.
- Someone is able to do something about all the vehicles that driving in the park. I been living here for 17 years and ever since the dirt trail was made the bluebonnets never grow anymore.
- Stop cars from driving in to the park.
- Entrance fee for non-residents.
- The park...is safe.
- The city enforces park hours and regulates safety. I hope that security is enforced for park visitors and the surrounding homes.
- Would like more surveillance and more monitoring at the park.
- No one can enjoy the park with cars and trucks illegally driving in walking/ biking areas and the blatant use of drugs, both day and night.
- Mountain Creek Lake Park can be a nice place to go like I know it can be. Instead of the place for idnt families and kids that don't really care about it.
- ...proper lighting and more non-motor vehicle signs up.
- I hope that the park feels safe at all times.

Answers translated from Spanish



mountain creek lake park

community engagement review

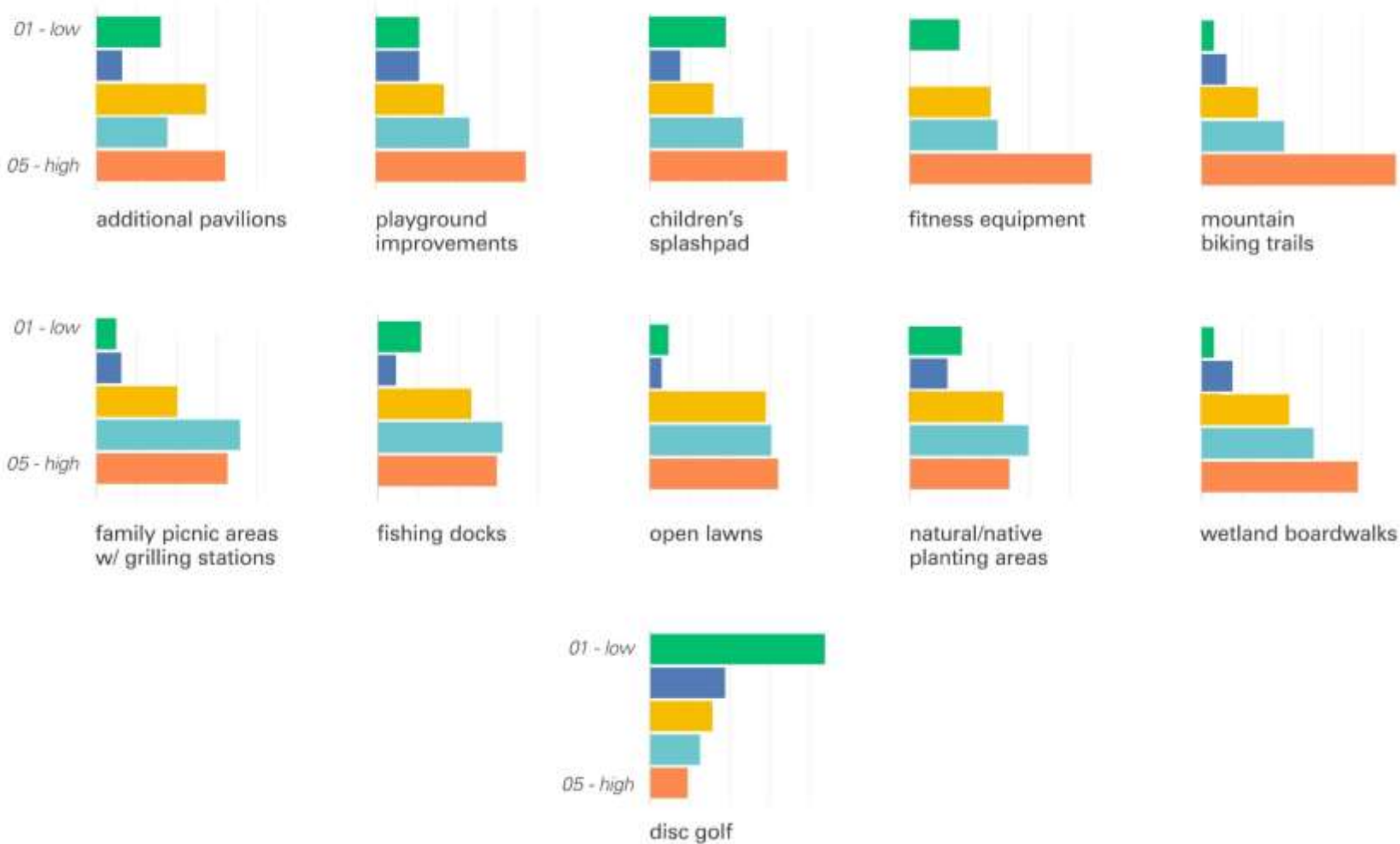
Grand Prairie, Texas  
Grand Prairie Parks & Recreation



Mi Familia Park

# Community Engagement – Survey Results

community engagement survey  
resident amenity preferences



Grand Prairie  
— T E X A S —  
PARKS, ARTS & RECREATION

Mi Familia Park



# Community Engagement – Survey Results

Do you or your family have any meaningful stories of your past experiences in the park that you would like to share with us?

## general neighborhood

- One day we got to have a birthday party at the park.
- After a stressful day at work, this is place I want to come to breathe fresh air and see families together without loud gas noise or loud music. Sometimes we even seen parrots on migration. I like to watch the families flying kites in the spring. I like to watch the frisbee people trying to land in the spots they have (is that disc golf?).
- We would play softball with the family. Family photos.
- Grew up going to this park now I take my children to this park and have spent countless holidays at this park.
- Had my first born's first birthday at the Pavilion. Great memories.
- Birthday parties.
- Growing up my father use to take us to the park.
- Birthdays. Zumba.
- Ever since COVID, I have learned/visited so many parks it gives me a sense of freedom and calmness that is much needed during this time.
- I used to fight here a lot but now it's more peaceful.
- Our sons played at this park in the 80s when they small.
- My two kids came to this park since they where little, and the swings were their first ones.
- It's such a wonderful part of our community. I love seeing so many people there at all times of day.
- We have come spend easter, picnics, and birthdays...When I was sick and came home from the hospital, my friends surprised me with a picnic party.
- My family moved across the street because of the beautiful lake view of the park.
- This park has been a host for several family gatherings. I hope it remains family friendly.
- I love the fact that families visit the park.

## amenities

- We use the park for sunset picnics, basketball, and walking the trails.
- My husband and I enjoy hiking the trails and being down by the water, especially in the spring when the bluebonnets and other wildflowers are out.
- Walking on the park with family.
- This park has been a great way to exercise by running and walking. I have encouraged people of the community to join and become healthier by exercising and the park is a great place to do that.
- We like to walk every afternoon.
- Me and my wife were really blessed to walk the trails during quarantine just to get out of the house.
- This park is walking distance from our house. The opening of trails inside the park is great for mountain biking and hike.
- I love bringing my dogs to the park and go bike riding.
- Picnics and basketball.
- I remember the wooden fitness equipment that my family and I would use on a regular bases. We would walk then stopped at every spot to get an extra workout in.
- Running in the mornings.
- We love having picnics and walking with our dog. We just love the trails especially by the shore line.

6 respondents said they had no memorable stories or experiences.

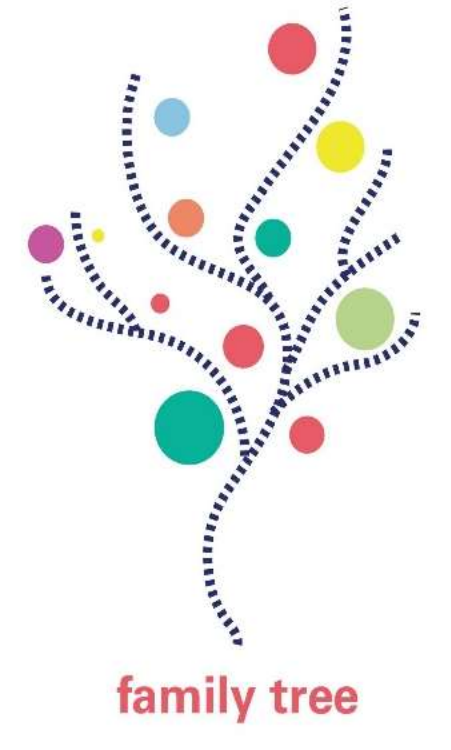
## access control + security

- The first time I took my grandson there crackheads were shooting up in their car.
- Lots of guys smoking inside. Four wheeler and motorbikes inside the park where people walk.
- I live 6 years ago in last house on the street Lakeview Lo Wuendy means I live in front of the park by both sides and I can say that the park one of the most necessary is to have more security in the park. Many people taken made donuts in it lawn park calls police and arrives two hours after they have already destroyed the lawn and it is a vandal they don't care about spaces.
- Since the park is dark we hear a lot of shootings. Our car and truck has been broken into.
- I have lived across the street from the park since 1994. I have called the police so many times trying to get all bad people out of there i think i have made a difference just love most of the good times I see now.
- Yeah I remember one time taking my grandkids there and them seeing condoms and needles. I know this probably ain't what you kinda asking for, but it was a meaningful experience for us when. Especially when your kids try to grab it and ask what is it.

## maintenance + operations

- We enjoy the birds/flowers on those walks.
- I remember when the pond in the middle actually had water now it's overgrown with grass.
- Enjoy the spring and taking pictures of the bluebonnets.

# Preliminary Design Concepts







Family Roots  
Design Concept

mountain creek lake park    concept design // family roots    [unintelligible]    [unintelligible]



Family Tree  
Design Concept

mountain creek lake park    concept design // family tree    [unintelligible]    [unintelligible]



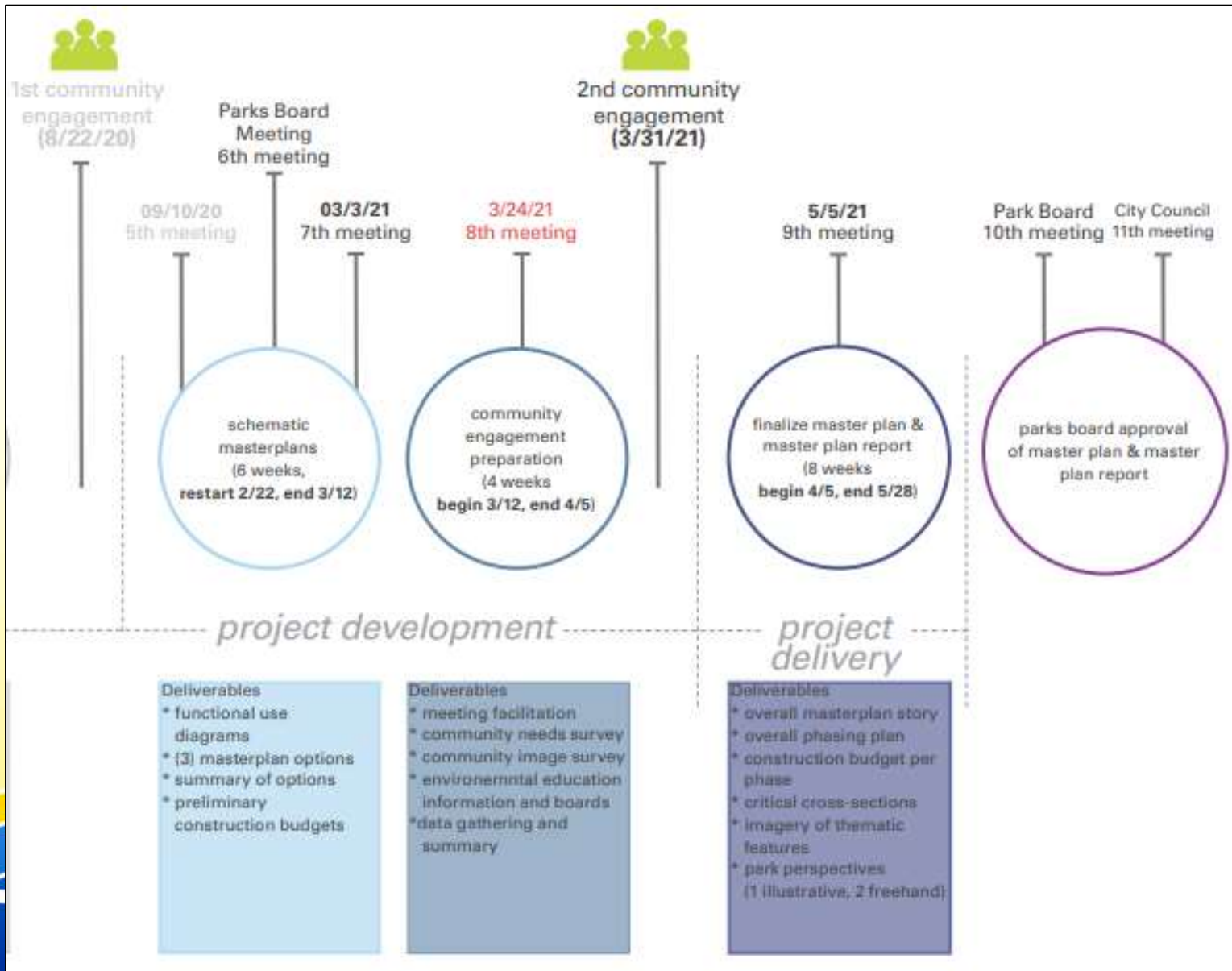
'New' Clear Family  
Design Concept

mountain creek lake park    concept design // 'new' clear family    [unintelligible]    [unintelligible]

# Mi Familia Park



# What's Next ??



  
 GRAND PRAIRIE  
 TEXAS  
 PARKS, ARTS & RECREATION

# Mi Familia Park

# Questions ??



Mi Familia Park