



*To develop, advance, and nurture all facets of the arts
to enhance the quality of life for Meridian residents and its visitors*

INITIAL POINT GALLERY SUBCOMMITTEE MEETING

Parks and Recreation Conference Room, 33 East Broadway Avenue Meridian, Idaho
Friday, June 28, 2024 at 3:00 PM

All materials presented at public meetings become property of the City of Meridian. Anyone desiring accommodation for disabilities should contact the City Clerk's Office at 208-888-4433 at least 48 hours prior to the public meeting.

Agenda

ROLL-CALL ATTENDANCE

___ Lizzie Taylor, Chair ___ Shaun Muscolo
___ Hannah Scoville ___ Brecken Bird

APPROVAL OF MINUTES [ACTION ITEM]

- 1. Approval:** Initial Point Gallery Subcommittee Minutes from 4-19-24

DISCUSSION ITEMS

- 2. Update:** Feedback and Listening Session Event with Idaho Commission on the Arts, July 11, 2024
- 3. Current and Upcoming Gallery Exhibits:** Current Exhibit: "Unplanned Experience" with Artists Pete Grady, Tyler Crabb, Kyla Morgan (Opening: June 4, Host: Brecken Bird); Upcoming Exhibit: "Cross Sections" Jan Freeman Long, Martha Channer, Stephen Fisher (Opening: August 6, Host: Patrick O'Leary; Additional Artist Talk Event: September 10 at Noon)
- 4. Discussion and Planning:** Review Juried Scoresheet Averages, Proposal of a 2025 Schedule Outline for Displays at Initial Point Gallery

ACTION ITEMS

- 5. Recommend Selected Artists:** Recommend Selected Artists and Groups from 2024 Applications for Initial Point Gallery Displays

NEXT MEETING - TBD, 2024

ADJOURNMENT



INITIAL POINT GALLERY SUBCOMMITTEE MEETING

Parks and Recreation Conference Room, 33 East Broadway Avenue Meridian, Idaho

Friday, April 19, 2024 at 3:00 PM

MINUTES

ROLL-CALL ATTENDANCE

Lizzie Taylor, Chair

Shaun Muscolo

Hannah Scoville

Brecken Bird

Also present Cassandra Schiffler Arts and Culture Coordinator, Paxton Hergenroeder Seasonal Arts and Culture Assistant, and local artist Martha Channer

Meeting begins at 3:00PM

APPROVAL OF MINUTES [ACTION ITEM]

- 1. Approval:** Initial Point Gallery Subcommittee Minutes from 2-16-24

S. Muscolo moves to approve the minutes from the last meeting (2-16-24)

B. Bird seconds

All ayes

DISCUSSION ITEMS

- 2. Proposed Event:** Dance Performance at IPG During Meridian Art Week ~ *Martha Channer, Community Artist*

Martha Channer presents her proposal for two choreographed dance pieces approximately 45 minutes to take place during the month of September when her work is on display at Initial Point Gallery.

Martha Channer will create a playbill.

L. Taylor asks about sponsors and timeline. Sponsors should be family friendly. Dress rehearsal will be coordinated with Cassandra. Music provided by Martha Channer.

3. **Updates and Planning:** Initial Point Gallery Exhibits: Current: "Stillness in the West"; Upcoming: West Ada School District's "Framed" (Opening: May 7, Host: Hannah Scoville) ~ *Commissioners/Staff*
H.Scoville will host "Framed" show reception but may have some scheduling conflicts. B.Bird and L.Taylor will be at the event help fill in if necessary. Install will be April 29th opening May 7th.
4. **Call to Artists Outreach and Marketing:** Initial Point Gallery Annual Call to Artists ~ *Paxton Hergenroeder, Seasonal Arts & Culture Assistant*
Paxton Hergenroeder gives an update on the call to artists for Initial Point Gallery. We have had good engagement online so far and marketing efforts will continue until the deadline May 31st. Soon after the deadline the jurying will begin for the 2025 shows. The hope is to have results in time for June IPG meeting. Cassandra Schiffler suggests that the meeting is moved to the 28th of June from the 21st. The subcommittee members agree.
L.Taylor suggests mentioning in the call in the future that artists who showed at the gallery during the previous year will not be chosen for the current year unless they are part of a larger group like BOSCO.
5. **Gallery Outreach:** Partner Table at Meridian Senior Center on April 29 ~ *Lizzie Taylor, IPG Chair*
L.Taylor updates the subcommittee about the short presentation she will give at the Meridian Senior Center about Initial Point Gallery on April 29th.
6. **Project Update:** Voices and Votes Smithsonian Exhibit Application through the Idaho Humanities Council ~ *Cassandra Schiffler, Arts & Culture Coordinator*
Cassandra and Paxton will apply for this exhibition and informed the subcommittee that if chosen the gallery would get \$1500 for programming.
L.Taylor suggests that the subcommittee should remain flexible in the schedule for art show in 2025 so we can accommodate this exhibition. Potentially leaving the December/January slot open until we get the results back.
7. **Discuss:** Tentative Feedback and Listening Session Event with Idaho Commission on the Arts, July 11, 2024 ~ *Cassandra Schiffler, Arts & Culture Coordinator*
Cassandra Schiffler updated the subcommittee on this potential event.

H.Scoville moves to adjourn the meeting

B.Bird seconds

All ayes

NEXT MEETING - MAY 17, 2024

ADJOURNMENT 3:44PM



Brad Little
GOVERNOR

May 2024

COMMISSIONERS

Steve Allred
Chair
Montpelier

Diana Livingston Friedley
Vice Chair
Pocatello

Marsha C. Bjornn
Rexburg

Derek Dean
Hailey

Marshall Garrett
Boise

Lynette Hale
Oakley

Sheila Hennessey
Boise

Jared Johnson
Twin Falls

Julia Oxarango-Ingram
Boise

Adrian San Miguel
Meridian

Blair Williams
Coeur d'Alene

AT-LARGE MEMBER

LaVerne Sessions
Salmon

Diana 'Dyno' Wahl
Sandpoint

Laura von Boecklin Curry
Executive Director

Arts Idaho wants to hear from you!

We are planning our work for the next five years, and we are holding Listening Sessions across the state to make sure that the voices of the folks we serve are represented in our new plan. We hope you will host a session in your community so that your ideas can help shape future funding, programs, and services to support the arts in Idaho. Here's what you can expect during a session:

1. **Introductions (10 minutes):**
Participants share their names and one word that describes the arts in their communities.
2. **About Arts Idaho (5 minutes):**
We give a quick overview of our agency's work and priorities.
3. **Activity: Investment in the Arts (15 minutes):**
Participants get make investments in the arts.
4. **Activity: Our Creative Future (20 minutes):**
The group does a little dreaming, then creates short articles describing future accomplishments in the arts in their communities.
5. **Farewell (10 minutes):**
We give folks time to share ideas that didn't surface during the session.

As a host, we will ask you to find a meeting space, then invite the folks in your community who should be at the table: artists, arts administrators and educators, arts patrons, and community leaders. Our sessions work well with small groups of up to 35 people.

If you are interested in hosting a session, please contact our Executive Director, Laura Curry: laura.curry@arts.idaho.gov or 208-334-7504. We hope to hear from you soon!

IDAHO COMMISSION ON THE ARTS

208-334-2119 // arts.idaho.gov

MAILING P.O. Box 83720 Boise, ID 83720-0008 OFFICE 9543 W. Emerald Street, Suite 204 Boise, ID 83704-9601



We're hosting a **LISTENING SESSION**

with the Idaho Commission on the Arts

Join us to share your ideas that can help shape future funding, programs, and services to support the arts in Idaho!

11 July 2024
AT 5:30 - 6:30 PM

Initial Point Gallery
Meridian City Hall, 3rd Floor
33 E. Broadway, Ave. Meridian, Idaho 83642

RSVP REQUIRED:

please email cschiffler@meridiancity.org to confirm attendance

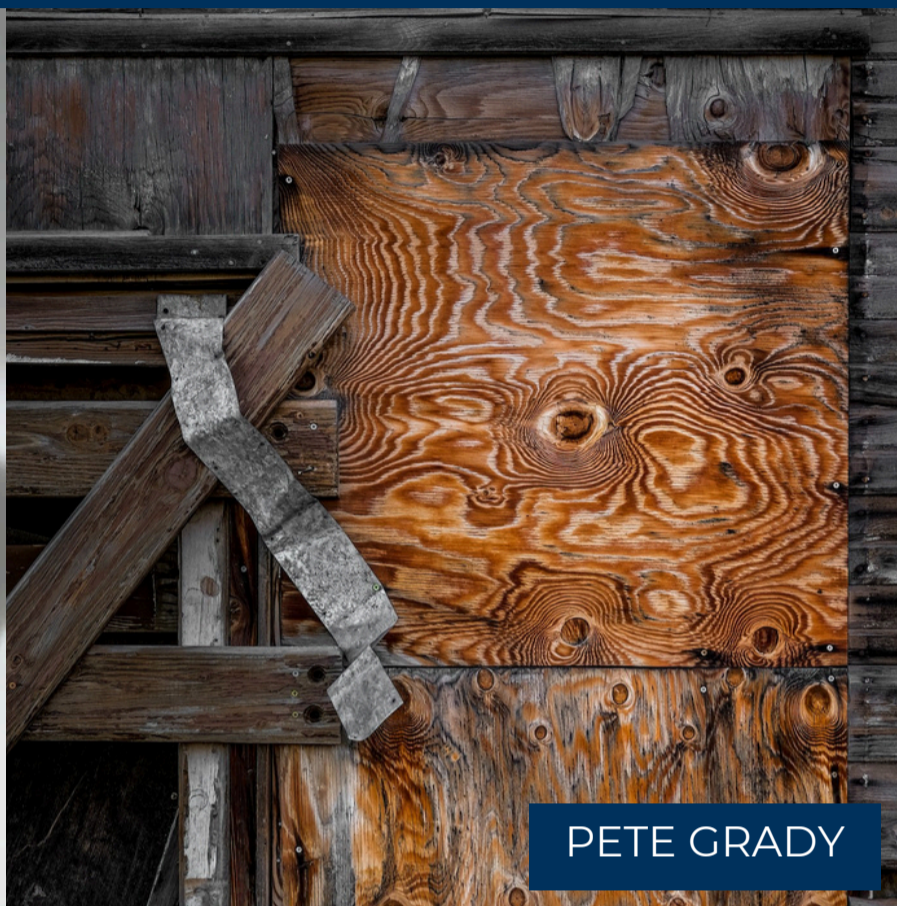
INITIAL POINT GALLERY 2024

Item 3.

UNPLANNED EXPERIENCE



KAYLA MORGAN



PETE GRADY

EXHIBITION ON
DISPLAY:

MAY 22 -
AUGUST 2



TYLER CRABB

ARTIST RECEPTION: TUESDAY, JUNE 4
4:30 - 7:00PM
ARTISTS TALK AT 6:00PM



meridiancity.org/gallery

MERIDIAN CITY HALL, THIRD FLOOR
33 EAST BROADWAY AVE. MERIDIAN, IDAHO 83642



Initial Point Gallery Applications for 2025

Item 4.

Artists will be Listed by averaged score rankings from highest to lowest scores

	Comments	Notes	Juror 1	Juror 2	Juror 3	Juror 4	Juror 5	Juror 6	Juror 7	Juror 8	Averages
2: Group - BOSCO (Brecken Bird)	It's hard to tell what the quality of the work will look like specifically, but knowing BOSCO it will be great- J5.....	Applied for 100ft and 4 3D cases / 25-30 2D pieces, 4-6 3D pieces / 16x20 typical size 2D, 12x12 typical size 3D		98	96	100	98	98	89	100	97
1: Group - Large Men with Small Brushes (Scott Muscolo)	I liked that they clarified the objective of their group, and it seems like they are really interested in being in IPG specifically! -J5.....	Applied for 100ft / 30-35 2D pieces / 17x24 typical size	99	98	100	93	93	98	89	100	96.25
Beth Trott	I love her art!! The only thing I found was that she didn't answer some of the questions in the call to artists. -J5	Applied for 50ft / 15-20 2D pieces / 18" wide typical size / watercolor paintings	100	98	99	87	96	100	89	100	96.125
Andrew (Andy) Forbes	Love that some are very large.- J3.....I really like his work and I think it's unique! It might be hard to display some of his large scale works which are arguably the most interesting. He also forgot to answer some of the call questions.-J5	Applied for 4 cases / 15 3D pieces / 14x14 typical size (Emailed artist letting them know they will not be able to use all pieces.)	97	99	95	100	87	97	85	97	94.625
5: Group - MGArnold Art	I didn't mind this one. The work felt a little boring but it was still nice. We did show one of these artists last year if that matters at all, but overall pretty good!	Applied for 100 ft and 4 3D cases / 30 2D pieces, 4-5 3D pieces / average size 16x20 2D, 16x20 3D / requests to show their work in April	99	94	97	90	87	99	85	100	93.875
4: Group - TVAA	The theme felt a little loose and not super meaningful. Like..just purple? I really liked about half of the images but the other half was either weird or just pretty basic. The pieces don't feel super connected to me. - J5.....	Applied for 100ft and 4 3D cases / 24-30 2D pieces, 4 3D pieces / 16x20 2D, 12x12x12 3D typical size / wants to hire their own musical talent	100	96	88	90	85	98	88	100	93.125
Antonia Hedrick	Sounds very applicable to the city and culture. -J1.....It seems like a lot of this work has already been displayed so I'm not sure if we can accept this. More research would be needed. I like her style of art though. -J5.....	Applied for 50ft / 6-10 2D pieces / 2'x4' , 3'x3' typical size	100	96	100	85	77	96	89	100	92.875
Gregory Ahley Newman	Outstanding. -J3	Applied for 25ft / 8-9 2D pieces / 15x24 typical size	100	94	100	80	88	97	81	100	92.5
Rick Newman	cool asian influences, could be cool to combine with korean pottery guy. - J5	Applied for 25ft and 1 3D case / 5 2D pieces, 1 3D piece / 30x23 typical 2D size, 6x6 typical 3D size	95	93	94	90	88	91	85	100	92
Leslie Jay Bosch	Love the message of her project! -J5	Applied for 4 3D cases / 4 pieces / 12x12x12 typical size	100	96	94	70	93	98	84	100	91.875
Elizabeth Hilton	missing proposal. Art was a little typical. -J5.....stunning composition and use of color-J8.....	applied for 25ft, 50ft, and 100 ft / 5, 10, 15 2D pieces / 24" typical size	100	100	99	75	74	98	89	98	91.625
6: Group - Artisans for Hope	I think this is a really cool concept that I haven't really seen in IPG before! My only concern is displaying the quilts. I'm not sure if IPG is set up to display these properly and more communication with the director of the group would be needed. -J5	Applied for 100ft / 30 2D pieces / 24x30 typical size	100	94	89	75	92	95	82	95	90.25
Mary Ann Fraser	Very professional -J3.....Pretty paintings -J4.....Really beautiful landscapes! -J5.....Beautiful work - J8.....	Applied for 25 and 50 ft / 8-20 pieces / 20x16 typical size, with a few larger pieces	80	97	97	70	92	98	88	100	90.25
Nikita Budkov	beautiful work! -J1.....Some of the paintings were a bit risque for a family audience.-J4	Applied for 50ft and 100ft / up to 20 2D pieces / 24x20 - 24x30 typical size	98	100	88	75	73	95	87	100	89.5
Brecken Bird		Applied for 50ft / 20 2D pieces / 16x20 typical size		100	77	77	88	99	89	93	89
Jennifer Moramarco	Missing proposal. Art was kind of hotel-ish -J5.....Thank you for applying to IPG, I love seeing your work! Something I have learned is that when you are sharing your work online or applying for galleries is when photographing your images you should crop off the surrounding space on the outside of your art (unless you are showing a size comparison next to an object like a lamp etc.). By doing this it will create a cleaner look.-J8.....	Applied for 25ft / 5-10 2D pieces / 30x30 typical size	98	96	85	85	73	94	86	95	89

Initial Point Gallery Applications for 2025

Item 4.

Rachel Reynolds	Amazing work! - J1I like the concept of putting animals with humans! Overall cool art. - J5.....Acrylic and oil on canvas Semblance of childhood -J7	Applied for 25ft/7 2D pieces/28x20-24x36 typical size	100	94	62	80	87	96	86	100	88.125
Stephen Purcell	Cool idea, want more variety. Missing a lot in the proposal.-J5	Applied for 50ft / 12 2D pieces / 20x24 typical size	92	90	93	85	75	89	84	95	87.875
Devon William Smith	Really cool photography! Missing some points from the call. -J5	Applied for 25ft / 18 2D pieces / 24x16 typical size / wants to hire their own musical talent	100	97	84	60	87	95	78	95	87
Crystal Paulson	The images all felt very similar, I was hoping for a bit more diversity.-J5.....	Applied for 50ft / 8 2D pieces / 15x21 typical size	100	94	77	80	70	99	87		86.71428571
Marcos Serratos	one of his documents included in the application says he will make 2 works each 24x18 in. Not sure if this will be enough. Depends on who he is paired with. Interesting project idea that engages the community though! -J1..... Psychedelic mushrooms may be inappropriate for City Hall. -J4	Applied for 25ft / unknown # of pieces / unknown size	94	92	71	60	88	96	87	100	86
Kathy Robinson		Applied for 75ft / 30 2D pieces / 24x20 typical size	65	94	95	65	82	96	87	100	85.5
Don Gura		Applied for 25ft / 12 2D pieces / 18x18 typical size	78	100	96	70	74	95	72	95	85
Reba Robinson	Not my thing, but some people might really like it. Are they really going to fit in the cases? They seem big...-J5	Applied for 4 3D cases / 4 pieces / 2-3ft typical size	97	100	94	45	84	92	80	88	85
Beverly Chick		Applied for all linear feet options (she's saying she is fine with any option) / 27-30 pieces / 22-24 typical size	74	94	78	77	73	97	83	100	84.5
Carol Zografos	Sweet quilts -J4	Applied for all linear feet options (is fine with any option, as she has 18 total pieces she can use) / 22-24 typical size	100	94	77	69	54	96	83	100	84.125
Hannah Tangelder	So great for someone so young! - J1.....I love that she's young artist! Maybe we could somehow feature one of her pieces? I just don't think she's ready for a whole section of IPG just yet. -J5....	Applied for 25ft / 10 2 D pieces / unknown size	90	86	94	65	63	92	80	100	83.75
3: Group - These Three Trees (Carolyn Greener, Andrew Groth, and Gretchen Weitmier)	Some of Greener's images could frighten children. -J3I found Carolyn Greener's work somewhat inappropriate to City Hall. -J4	Applied for 100ft / 29 2D pieces / 16x16 - 24x36 average size	96	92	71	70	65	89	84	95	82.75
Stephen Aifegha	Manifested Anger -J3.....You are clearly gifted and have a lot to say. I believe your art would be better received in a different venue.-J8.....	Applied for 50ft / 8 2D pieces / 48x36 typical size	100	96	60	75	82	90	85	72	82.5
Carrie Rodak	Kind of lack-luster. Also missing some points from the call. Very professional document though.	Applied for 25ft / 10 2D pieces / 20x20 typical size	70	95	92	67	67	94	79	92	82
Michael (Mike) Turner		Applied for 50ft / 8-10 2D pieces / 220 sq inches typical size / Digital Art	73	95	83	70	73	89	77	95	81.875
7: Group - Avimore Fine Arts Group (Todd Chavez, Elizabeth Boggs, Matthew Horner, and Davina Parypa)	Application itself was unorganized. Poor photos of artwork. No discernible theme or proposal for the group. -J1..... Some Horner images are NOT acceptable. Strange grouping of artistic styles. - J3....Exhibit seems disjointed. The 4 artists might be better shown with other 1/4 gallery exhibitors. Do they have to show together? -J4	Applied for 100ft (Davina 50) / 32+ 2D pieces / 9x12 - 32 x 36 typical size	88	96	77	60	69	75	84	94	80.375
Rosemary Fox Leal	Missing proposal. Art is nice but not particularly unique.-J5	Applied for 50ft / 19 2D pieces / 16 x 20 typical size	59	92	82	55	77	91	79	100	79.375
8: Group: The Human Touch (Mary Gardiner and Gary Don McCall)		Applied for 100ft total / 30 2D pieces / 20 x24 - 24x30 typical size	88	87	58	73	79	85	85	77	79

Initial Point Gallery Applications for 2025

Item 4.

Bailey Fletcher	Could be cute to have more than 1-3 pieces -J3.....Felt a bit too childish for me. Her proposal also felt unprofessional. -J5.....	Applied for 1 3D case / 1-3 pieces / 2-6" typical height	89	95	81	45	53	86	83	100	79
Teresa Heinz	A little whimsical, missing a lot in the proposal. -J5.....Your art has a good use of light and is lovely. You may consider leaving Santa out of your proposal in future; while he is fun and whimsical, he does not fit the theme of your other work.-J8	Applied for 50 ft / 25-30 2D pieces / 24x36 - 18x18 various sizes / flexible with wall space, says whatever works for us	79	92	92	80	74	91	86	100	79
Brea Gilchrist	No proposal and some artwork may be considered inappropriate for IPG.-J5.....	Applied for 25ft / 5-8 2D pieces / 36x36 typical size	96	100	0	55	73	95	84	97	75
Misty Monster	Cute -J4.....Yeah definitely no on these ones. Just the wrong style and vibe for IPG. -J5.....	applied for 25 ft / 13 2D pieces / 22x26 typical size	80	94	0	60	55	89	87	82	68.375
Jose Trejo Maya	This proposal isn't very clear. It left me a bit confused and I am unsure how it will be implemented at IPG. I would have loved to read samples of this persons actual poems. -J1 Would have liked to see clearer examples of the artist's works. -J2	Applied for 25 ft / open # of 2D pieces / 8.5x11 typical size	24	90	0	60	59	96	75	70	59.25

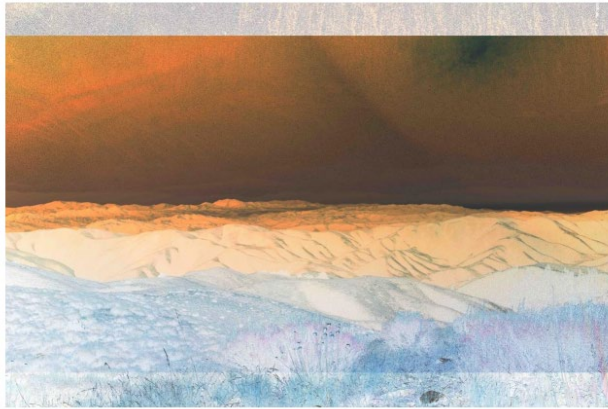
Initial Point Gallery

2025 Draft Schedule 6/25/24

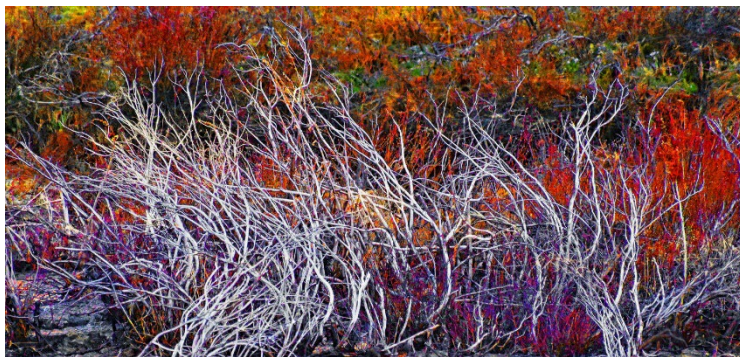
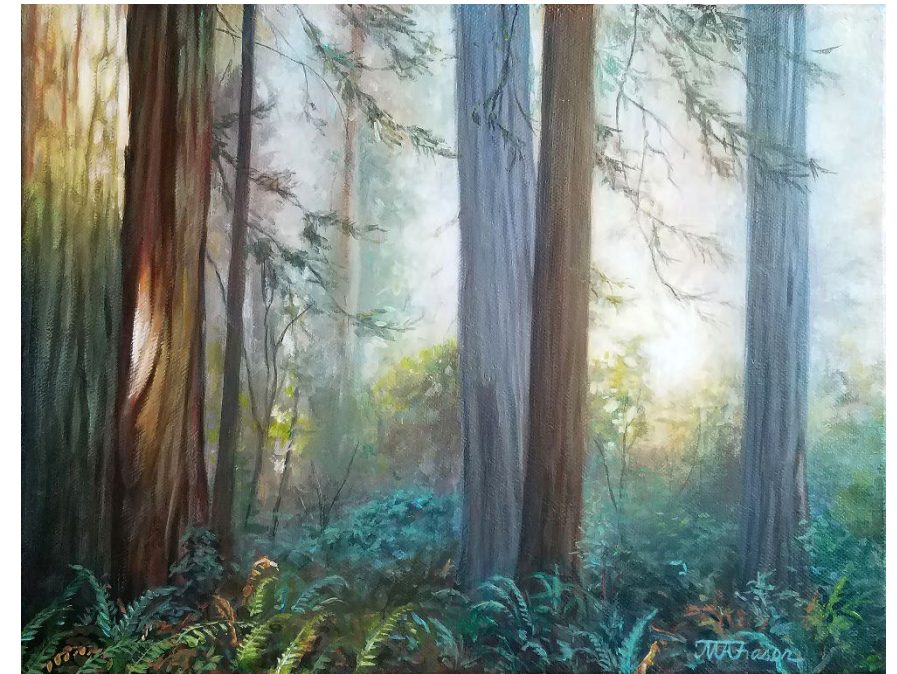
February 4, 2025
February 28, 2025

Inverted Color. Item 4.

Devon William Smith, Rachel Reynolds, Gregory Ahley
Newman, Mary Ann Fraser and Leslie Jay Bosch (3D)



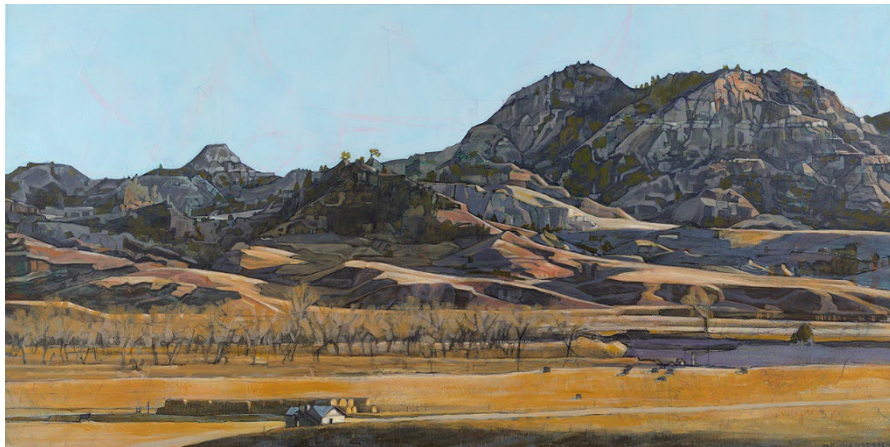
Final Scene, 24 x 16, Digital Photography



March 4 2024 –
March 28 2024

UNNAMED SHOW Item 4.

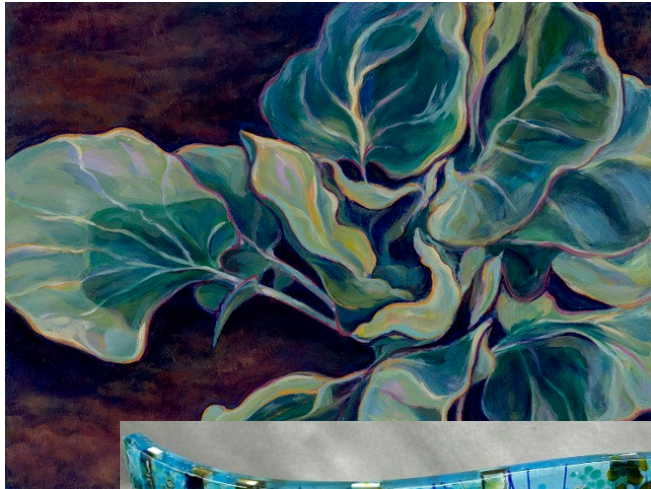
Antonia Hedrick and Beth Trott
(3D artist TBD)



April 1 2025 –
April 25 2025

Of Leaf and Petal Item 4.

Claire Remsberg, Jessie Swimeley,
Cindi Walton, Jill Storey, and Suzi Butler (3D)



April 29 2025 –
May 19 2025

Item 4.

West Ada School District Show

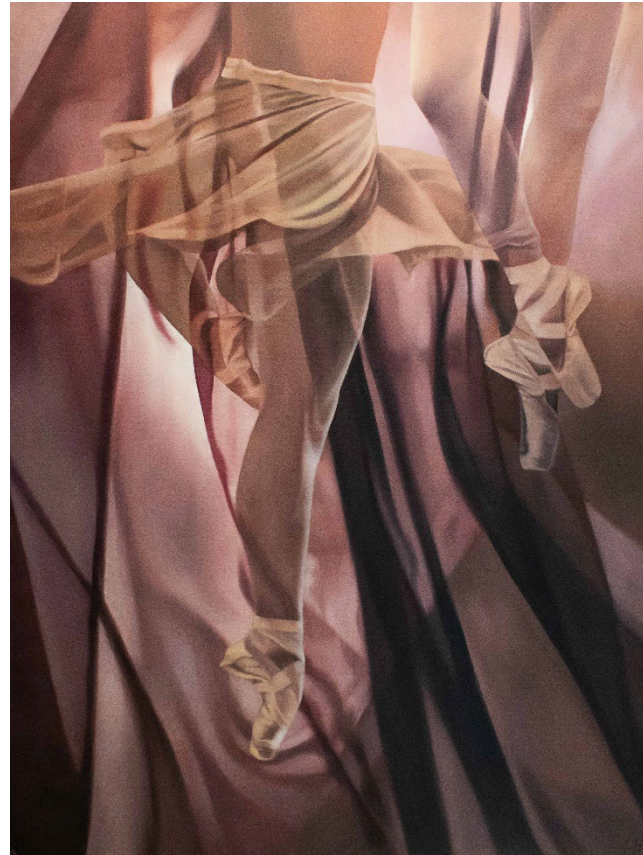
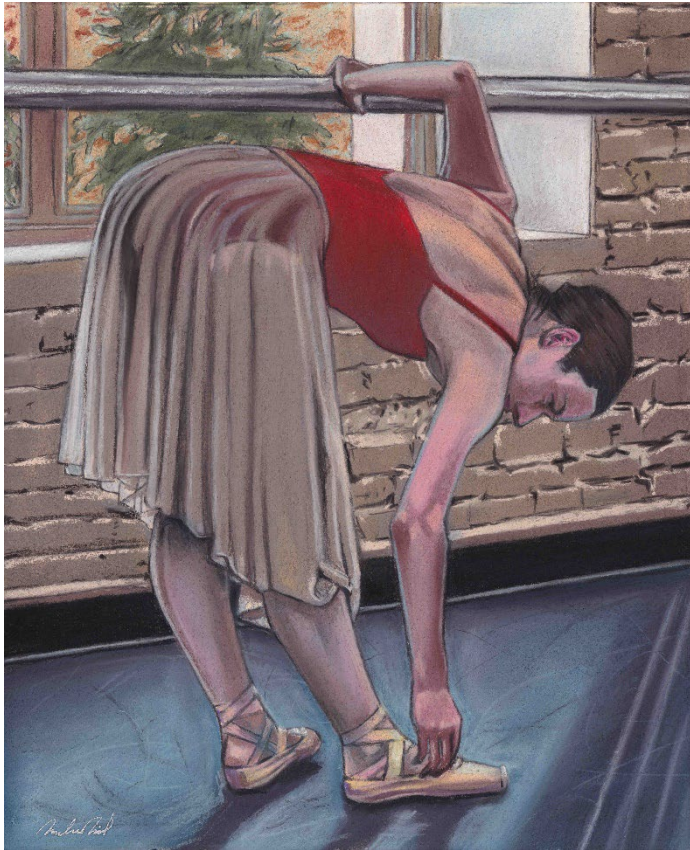


Images shown are from WASD's exhibit at
Initial Point Gallery in May 2024

May 21 2025 –
August 1 2025

Rodeo, An Idaho Icon Item 4.

Boise Open Studios Collective Organization
(BOSCO)

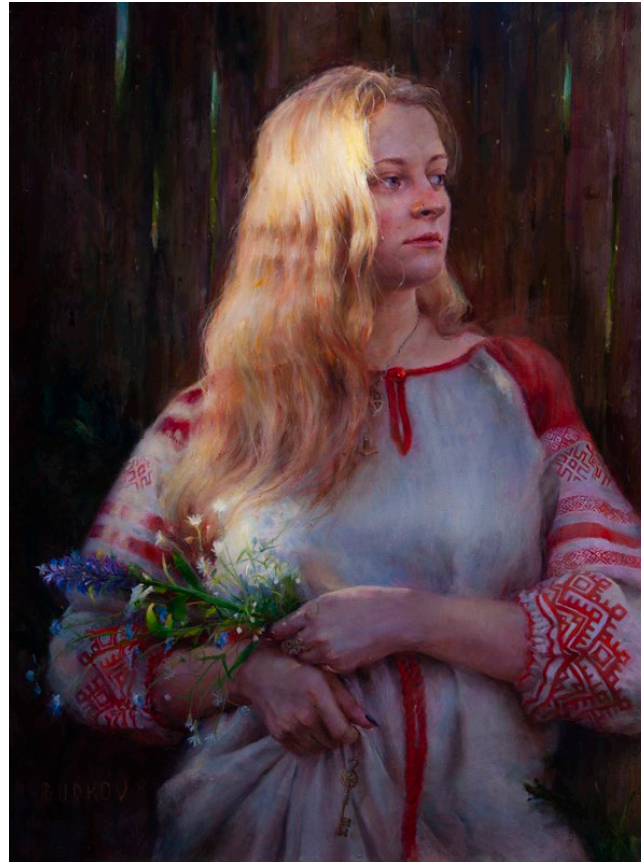
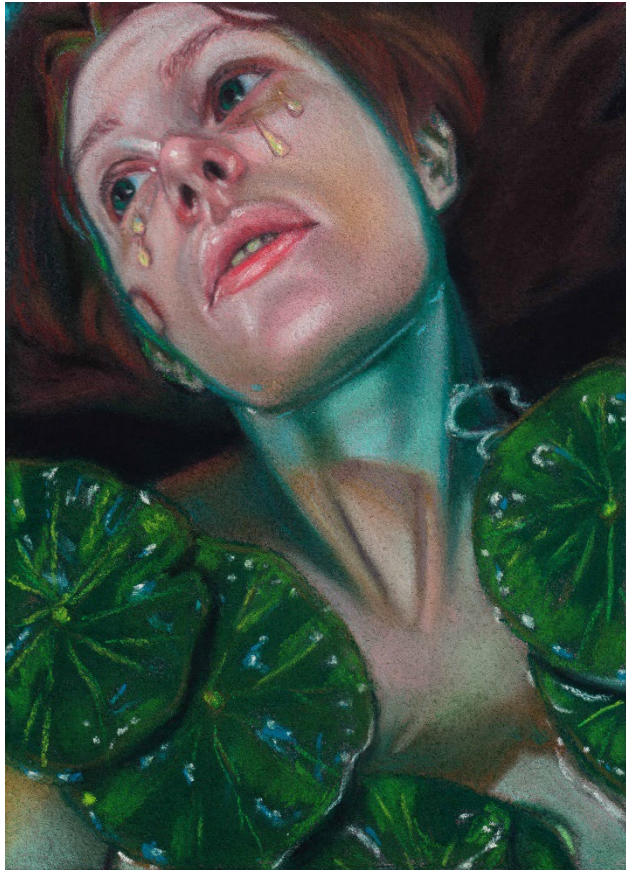


Images shown are from BOSCO's Ballet Idaho collaboration exhibit at Initial Point Gallery in 2024

August 5 2025
August 29 2025

Myths and Morals Item 4.

Brecken Bird, Nikita Budkov,
and Reba Robinson (3D)



September 2 2025 –
October 31 2025

Large Men with Small Brushes Item 4.

Scott Muscolo, Roy Gover, Hugh Mossman, Dennis Hazlett, Don Belts, and Andrew Forbes (3D)

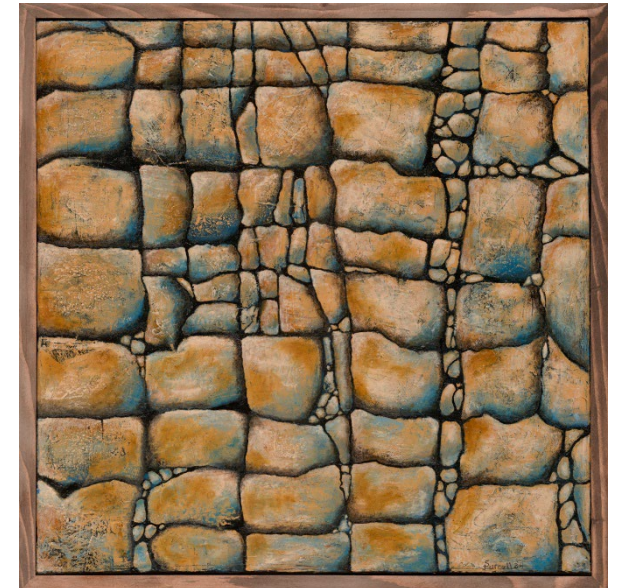
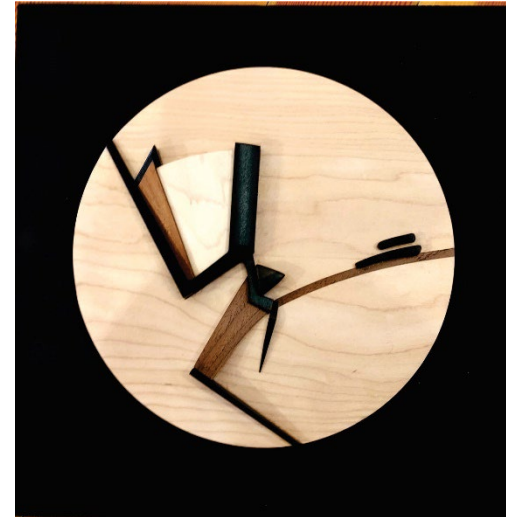


November 5 2025 –
November 28 2025

Unnamed Texture Show.

Item 4.

Elizabeth Hilton, Stephen Purcell, Jennifer Moramarco, Rick Newman (3D artist TBD)



December 2 2025 - January 31 2026

Item 4.

Purple Plus:

Treasure Valley Artist Alliance

